

LOC/DME I-DPP 110.15 Chan 38(Y)	APP CRS 353°	Rwy Idg 12000 TDZE 5370 Apt Elev 5434
---	------------------------	--

ILS RWY 35R (CAT II & III)

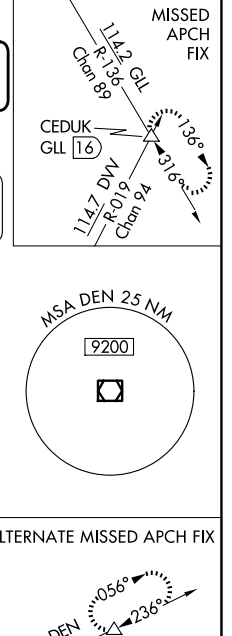
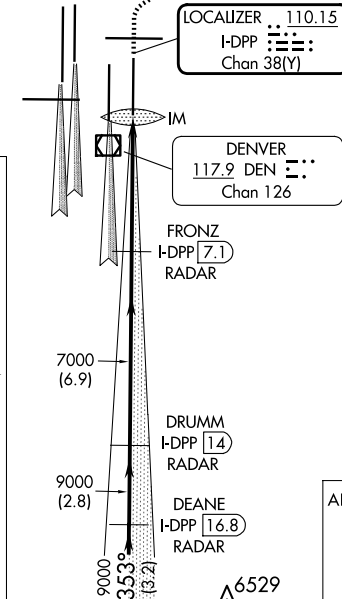
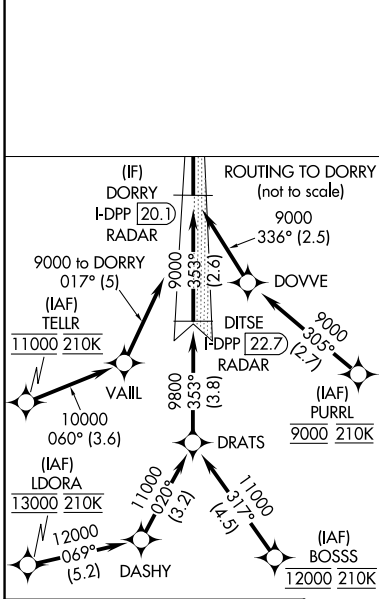
DENVER INTL (DEN)

Simultaneous approach authorized with Rwy 34L, Rwy 34R, and Rwy 35L. CAT II: RVR 1000 authorized with specific OPSPEC, MSPEC, or LOA approval and use of autoland or HUD to touchdown.

ALSF-2 MISSED APPROACH: Climb to 5800 then climbing right turn to 10000 on heading 048° and on GLL VORTAC R-136 to CEDUK/GLL 16 DME and hold.

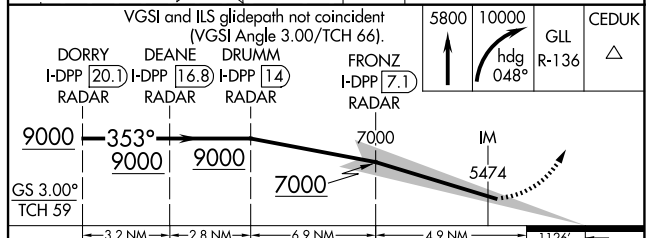
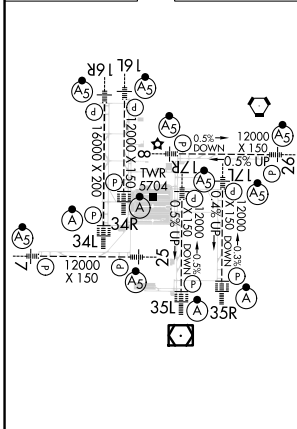
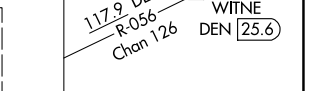
D-ATIS 125.6 379.9 (ARR) 134.025 (DEP)	DENVER APP CON 119.3 307.3 (N) 120.35 379.3 (S)	DENVER TOWER 132.35 239.275	GND CON 121.35 379.175 (W) 121.85 377.1 (E)	CLNC DEL 118.75	CPDLC
--	---	---------------------------------------	---	---------------------------	-------

RADAR or GPS REQUIRED



ELEV 5434	D	TDZE 5370
-----------	----------	-----------

SEE INSET FOR ROUTING TO DORRY



CATEGORY	A	B	C	D
S-ILS 35R	CAT II RA 111/12 100 DA 5470			
S-ILS 35R	CAT IIIa RVR 07			
S-ILS 35R	CAT IIIb RVR 03			
S-ILS 35R	CAT IIIc NA			

CATEGORY II & III ILS - SPECIAL AIRCREW & AIRCRAFT CERTIFICATION REQUIRED

HIRL all Rwy
TDZ/CL Rwy 7, 16L, 16R, 17R, 26, 34L, 34R, 35L, 35R

SW-1, 23 JAN 2025 to 20 FEB 2025

SW-1, 23 JAN 2025 to 20 FEB 2025