

<b>LOC/DME I-LTT</b> <b>111.1</b> Chan <b>48</b>	<b>APP CRS</b> <b>173°</b>	Rwy Idg <b>12000</b> TDZE <b>5357</b> Apt Elev <b>5434</b>
--	-------------------------------	--

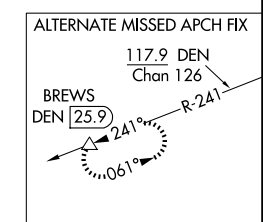
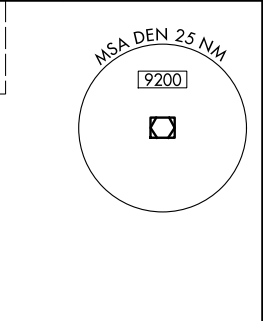
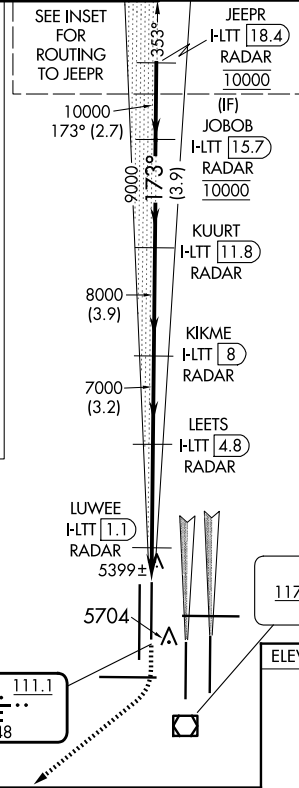
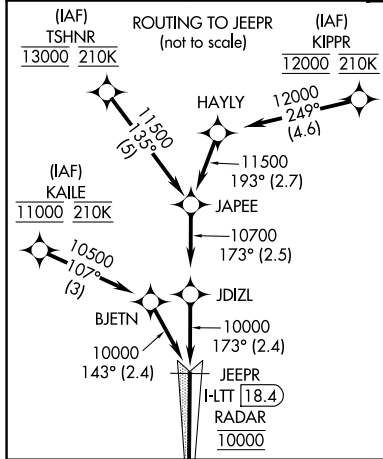
# ILS or LOC RWY 16L

DENVER INTL (DEN)

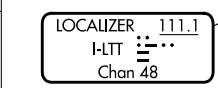
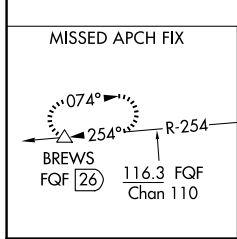
Simultaneous approach authorized with Rwy 17L/17R. DME required. S-LOC 16L DME or RADAR required. For inoperative MALS<sub>R</sub>, increase S-LOC Cat C/D visibility to RVR 4500.

**MALS<sub>R</sub>**   
**MISSED APPROACH:** Climb to 5900 then climbing right turn to 12000 on heading 218° and on FQF VORTAC R-254 to BREWS/FQF 26 DME and hold.

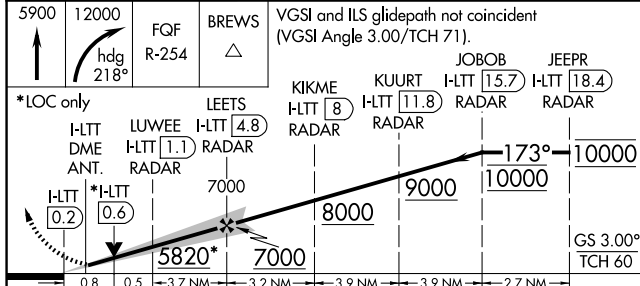
<b>D-ATIS</b> <b>125.6</b> <b>379.9</b> (ARR) <b>134.025</b> (DEP)	<b>DENVER APP CON</b> <b>119.3</b> <b>307.3</b> (N) <b>120.35</b> <b>379.3</b> (S)	<b>DENVER TOWER</b> <b>135.3</b> <b>351.95</b>	<b>GND CON</b> <b>121.35</b> <b>379.175</b> (W) <b>121.85</b> <b>377.1</b> (E)	<b>CLNC DEL</b> <b>118.75</b>	<b>CPDLC</b>
--	--	---	--	----------------------------------	--------------



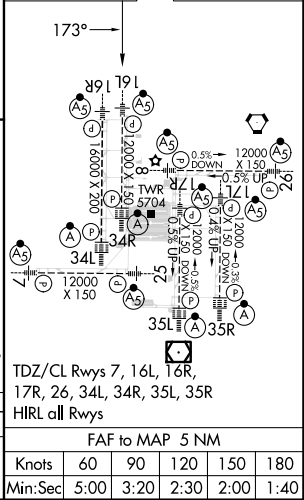
**RADAR or GPS REQUIRED**



**DENVER**  
117.9 DEN  
Chan 126



<b>ELEV</b> 5434	<b>TDZE</b> 5357
------------------	------------------



<b>CATEGORY</b>	<b>A</b>	<b>B</b>	<b>C</b>	<b>D</b>
<b>S-ILS 16L</b>		5557/18	200 (200-½)	
<b>S-LOC 16L</b>		5660/24	303 (300-½)	

	<b>FAF to MAP 5 NM</b>				
<b>Knots</b>	60	90	120	150	180
<b>Min:Sec</b>	5:00	3:20	2:30	2:00	1:40

SW-1, 23 JAN 2025 to 20 FEB 2025

SW-1, 23 JAN 2025 to 20 FEB 2025