

ILS or LOC RWY 16R

DENVER INTL (DEN)

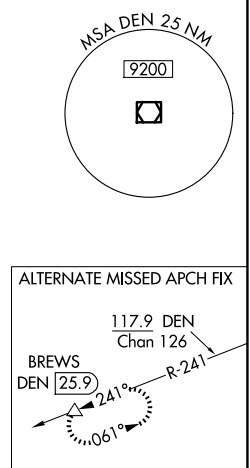
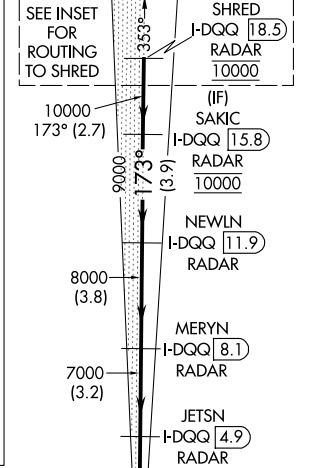
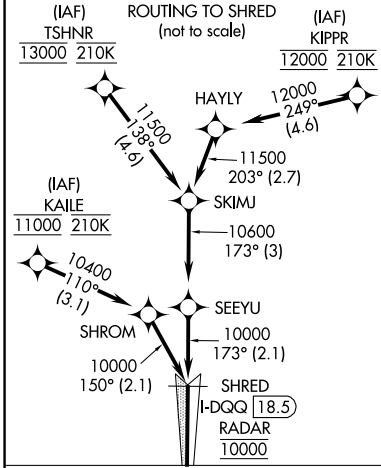
LOC/DME I-DQIQ	APP CRS	Rwy Idg	16000
111.9	173°	TDZE	5326
Chan 56		Apt Elev	5434

⚠ For inoperative MALSR, increase S-LOC Cat C/D visibility to RVR 4500. Simultaneous approach authorized with Rwy 17L and 17R. DME required.

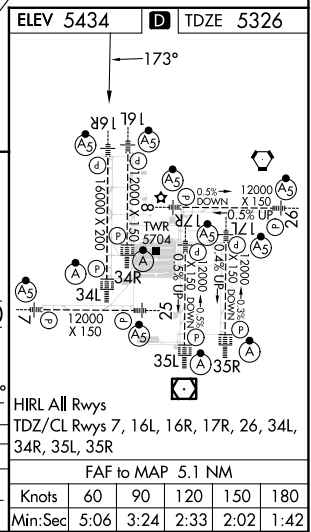
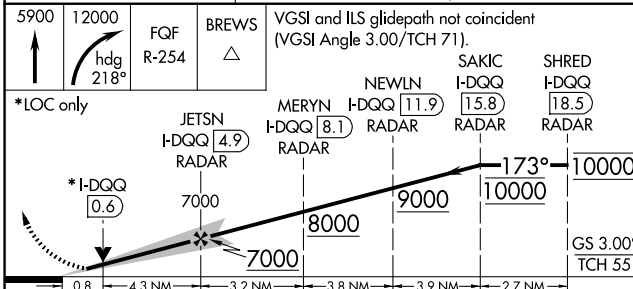
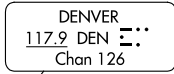
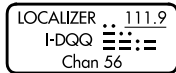
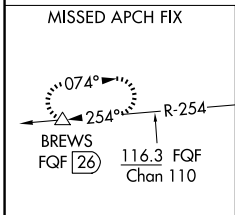
MALSR 

MISSED APPROACH: Climb to 5900 then climbing right turn to 12000 on heading 218° and on FGF VORTAC R-254 to BREWS/FQF 26 DME and hold.

D-ATIS 125.6 379.9 (ARR) 134.025 (DEP)	DENVER APP CON 119.3 307.3 (N) 120.35 379.3 (S)	DENVER TOWER 135.3 351.95	GND CON 121.35 379.175 (W) 121.85 377.1 (E)	CLNC DEL 118.75	CPDLC
--	---	-------------------------------------	---	---------------------------	-------



RADAR or GPS REQUIRED



CATEGORY	A	B	C	D
S-ILS 16R	5526/18 200 (100-½)			
S-LOC 16R	5640/24 314 (300-½)			

SW-1, 23 JAN 2025 to 20 FEB 2025

SW-1, 23 JAN 2025 to 20 FEB 2025