

LOC/DME I-ERP 111.55 Chan 52(Y)	APP CRS 263°	Rwy Idg 12000 TDZE 5355 Apt Elev 5434
---	------------------------	--

ILS or LOC RWY 25

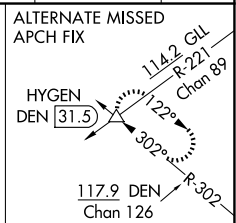
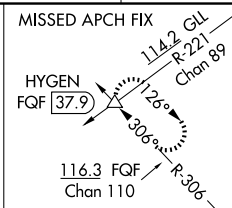
DENVER INTL (DEN)

Simultaneous approach authorized with Rwy 26. For inoperative MALSR, increase S-LOC 25 Cat C and D visibility to RVR 5500. **RVR 1800 authorized with use of FD or AP or HUD to DA.

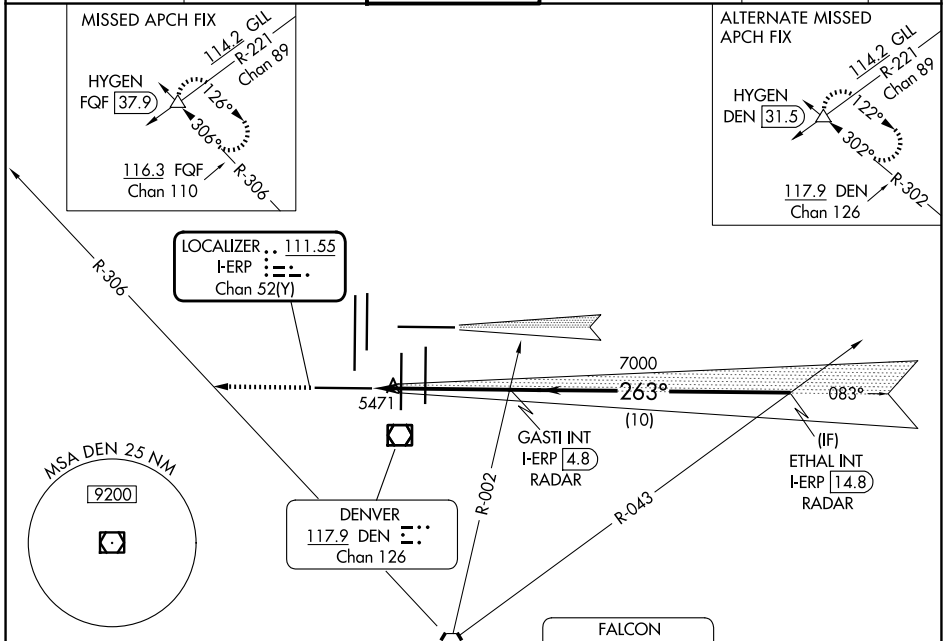


MISSED APPROACH: Climb to 10000 on heading 263° and on FQF VORTAC R-306 to HYGEN INT/FQF 37.9 DME and hold.

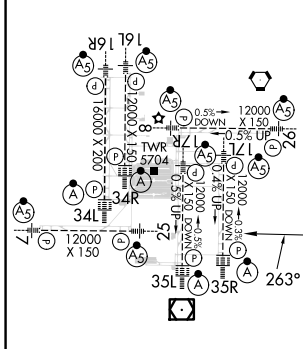
D-ATIS 125.6 379.9 (ARR) 134.025 (DEP)	DENVER APP CON 119.3 307.3 (N) 120.35 379.3 (S)	DENVER TOWER 128.75 273.55	GND CON 121.35 379.175 (W) 121.85 377.1 (E)	CLNC DEL 118.75	CPDLC
--	---	--------------------------------------	---	---------------------------	-------



LOCALIZER .. 111.55
I-ERP : : : :
Chan 52(Y)



ELEV 5434	D	TDZE 5355
-----------	----------	-----------

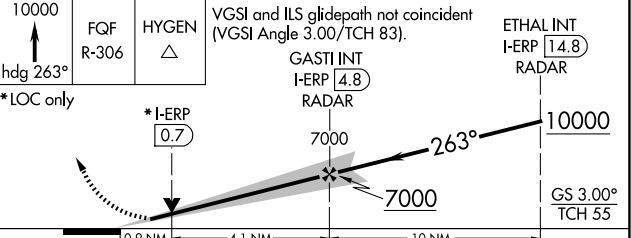


HIRL all Rwys
TDZ/CL Rwys 7, 16L, 16R, 17R, 26, 34L, 34R, 35L, 35R

FAF to MAP 5 NM

Knots	60	90	120	150	180
Min:Sec	5:00	3:20	2:30	2:00	1:40

△ 6270 ± RADAR REQUIRED



CATEGORY	A	B	C	D
S-ILS 25 **	5555/24 200 (200-½)			
S-LOC 25	5720/24	365 (300-½)	5720/35	365 (300-⅝)

SW-1, 23 JAN 2025 to 20 FEB 2025

SW-1, 23 JAN 2025 to 20 FEB 2025