

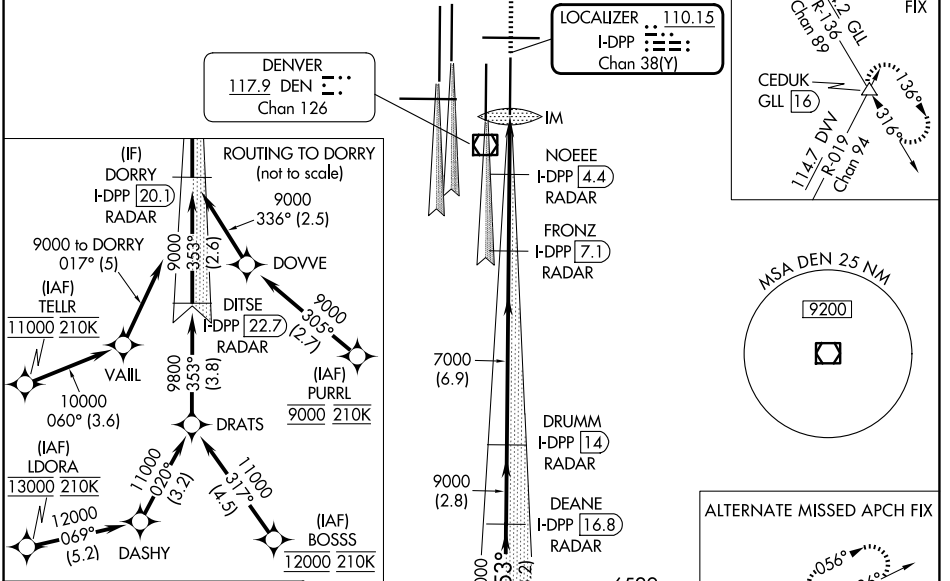
LOC/DME I-DPP 110.15 Chan 38(Y)	APP CRS 353°	Rwy Idg 12000 TDZE 5370 Apt Elev 5434
---	------------------------	--

ILS or LOC RWY 35R

DENVER INTL (DEN)

<p>▽ S-LOC 35R DME or RADAR required. Simultaneous approach authorized with Rwy 34L, Rwy 34R, and Rwy 35L.</p>	ALSF-2 (A)	MISSED APPROACH: Climb to 5800 then climbing right turn to 10000 on heading 048° and on GLL VORTAC R-136 to CEDUK/GLL 16 DME and hold.			
D-ATIS 125.6 379.9 (ARR) 134.025 (DEP)	DENVER APP CON 119.3 307.3 (N) 120.35 379.3 (S)	DENVER TOWER 132.35 239.275	GND CON 121.35 379.175 (W) 121.85 377.1 (E)	CLNC DEL 118.75	CPDLC

RADAR or GPS REQUIRED

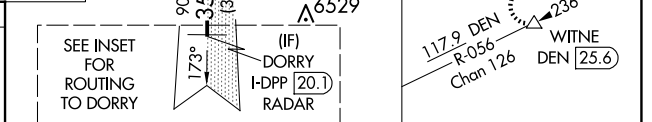
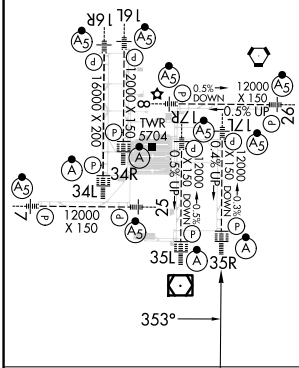


SW-1, 23 JAN 2025 to 20 FEB 2025

SW-1, 23 JAN 2025 to 20 FEB 2025

ELEV 5434	D	TDZE 5370
-----------	----------	-----------

HIRL all Rwy's
TDZ/CL Rwy's 7, 16L, 16R, 17R, 26, 34L, 34R, 35L, 35R



	DORRY I-DPP 20.1 RADAR	DEANE I-DPP 16.8 RADAR	DRUMM I-DPP 1.4 RADAR	FRONZ I-DPP 7.1 RADAR	NOEE I-DPP 4.4 RADAR	GLL CEDUK	
						R-136 △	
						* LOC only	
9000	353°	9000	9000	7000	7000		
GS 3.00°							
TCH 59							
	3.2 NM	2.8 NM	6.9 NM	2.7 NM	1.3 NM	0.9 0.1	
CATEGORY	A		B		C		D
S-ILS 35R	5570/18 200 (200-½)						
S-LOC 35R	5740/24 370 (400-½)		5740/35 370 (400-¾)				