

PLAINS ONE DEPARTURE  
(PLAIN1.DEN) 30JAN20

PLAINS ONE DEPARTURE  
23334

AL-9077 (FAA)

DENVER INTL (DEN)  
DENVER, COLORADO

DENVER DEP CON  
128.25 371.95  
D-ATIS DEP  
134.025  
CLNC DEL  
118.75  
CPDLC

**TOP ALTITUDE:  
10000**



DENVER  
117.9 DEN  
Chan 126

AKRON  
114.4 AKO  
Chan 91

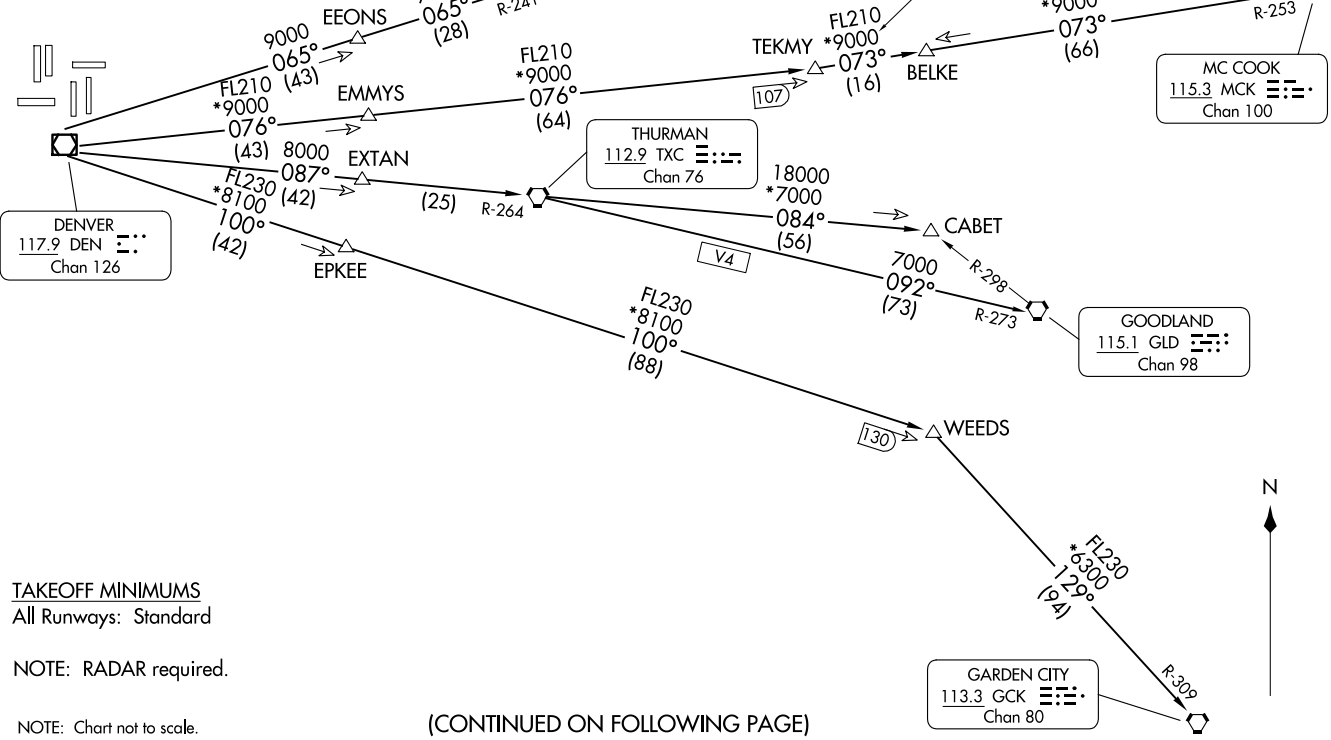
THURMAN  
112.9 TXC  
Chan 76

GOODLAND  
115.1 GLD  
Chan 98

GARDEN CITY  
113.3 GCK  
Chan 80

HAYES CENTER  
117.7 HCT  
Chan 124

MC COOK  
115.3 MCK  
Chan 100



TAKEOFF MINIMUMS  
All Runways: Standard

NOTE: RADAR required.

NOTE: Chart not to scale.

(CONTINUED ON FOLLOWING PAGE)





DEPARTURE ROUTE DESCRIPTION

TAKEOFF ALL RUNWAYS: Fly assigned heading for RADAR vectors to assigned route. Climb and maintain 10000 or ATC assigned lower altitude. Expect filed altitude 10 minutes after departure.

LOST COMMUNICATIONS:

If no transmissions are received within one minute after departure, maintain assigned heading until 7000 feet, then climb to filed altitude via direct DEN VOR/DME, thence via assigned transition. If filed altitude is above 10000 feet, cross DEN VOR/DME at or above 11000 feet.

AKRON TRANSITION (PLAIN1.AKO): From over DEN VOR/DME on DEN R-065 and AKO R-241 to AKO VOR/DME.

ASHBY TRANSITION (PLAIN1.ASHBY): From over DEN VOR/DME on DEN R-065 and AKO R-241 to AKO VOR/DME, then on AKO R-066 and HCT R-250 to ASHBY.

BELKE TRANSITION (PLAIN1.BELKE): From over DEN VOR/DME on DEN R-076 and MCK R-253 to BELKE INT.

CABET TRANSITION (PLAIN1.CABET): From over DEN VOR/DME on DEN R-087 and TXC R-264 to TXC VORTAC, then on TXC R-084 to CABET.

GARDEN CITY TRANSITION (PLAIN1.GCK): From over DEN VOR/DME on DEN R-100 and GCK R-309 to GCK VORTAC.

GOODLAND TRANSITION (PLAIN1.GLD): From over DEN VOR/DME on DEN R-087 and TXC R-264 to TXC VORTAC, then on TXC R-092 and GLD R-273 to GLD VORTAC.

HAYES CENTER TRANSITION (PLAIN1.HCT): From over DEN VOR/DME on DEN R-065 and AKO R-241 to AKO VOR/DME, then on AKO R-066 and HCT R-250 to HCT VORTAC.

MCCOOK TRANSITION (PLAIN1.MCK): From over DEN VOR/DME on DEN R-076 to TEKMY, then on MCK R-253 to MCK VOR/DME.

THURMAN TRANSITION (PLAIN1.TXC): From over DEN VOR/DME on DEN R-087 and TXC R-264 to TXC VORTAC.

WEEDS TRANSITION (PLAIN1.WEEDS): From over DEN VOR/DME on DEN R-100 to WEEDS.

SW-1, 23 JAN 2025 to 20 FEB 2025

SW-1, 23 JAN 2025 to 20 FEB 2025