


# RNAV (RNP) Z RWY 16R

DENVER INTL (DEN)

APP CRS <b>170°</b>	Rwy Idg <b>16000</b>
	TDZE <b>5326</b>
	Apt Elev <b>5434</b>

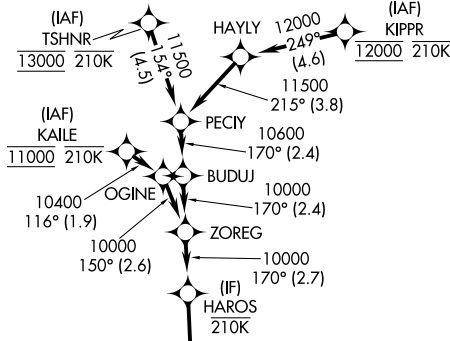
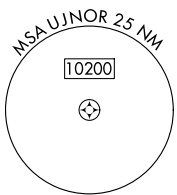
RNP AR APCH - GPS.

Simultaneous approach authorized. For uncompensated Baro-VNAV systems, procedure NA below -24°C or above 54°C. For inop ALS, increase RNP 0.30 all Cats visibility to RVR 4500.

MALSR 

MISSED APPROACH: Climb to 5900 then climbing right turn to 10000 direct BINBE and hold, continue climb-in-hold to 10000.

D-ATIS <b>125.6 379.9 (ARR)</b> <b>134.025 (DEP)</b>	DENVER APP CON <b>119.3 307.3 (N)</b> <b>120.35 379.3 (S)</b>	DENVER TOWER <b>135.3 351.95</b>	GND CON <b>121.35 379.175 (W)</b> <b>121.85 377.1 (E)</b>	CLNC DEL <b>118.75</b>	CPDLC
--	---	-------------------------------------	---	---------------------------	-------

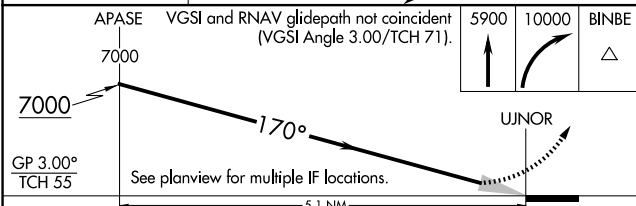
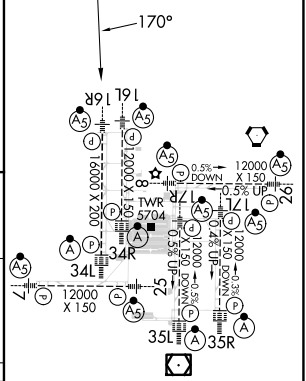


△ 6260

Final approach course offset 3.00°.



ELEV 5434	TDZE 5326
-----------	-----------



CATEGORY	A	B	C	D
RNP 0.30 DA	5596/24 270 (200-½)			

## AUTHORIZATION REQUIRED

HIRL all Rwys  
 TDZ/CL Rwys 7, 16L, 16R, 17R,  
 26, 34L, 34R, 35L, 35R

SW-1, 23 JAN 2025 to 20 FEB 2025

SW-1, 23 JAN 2025 to 20 FEB 2025