

RNAV (RNP) Z RWY 26


DENVER INTL (DEN)

APP CRS 263°	Rwy Idg 12000
	TDZE 5309
	Apt Elev 5434

RNP AR APCH.

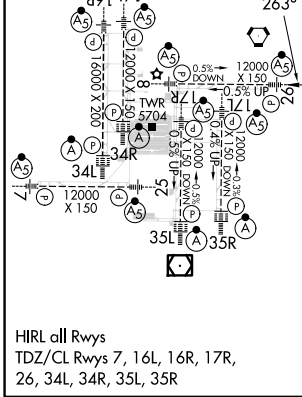
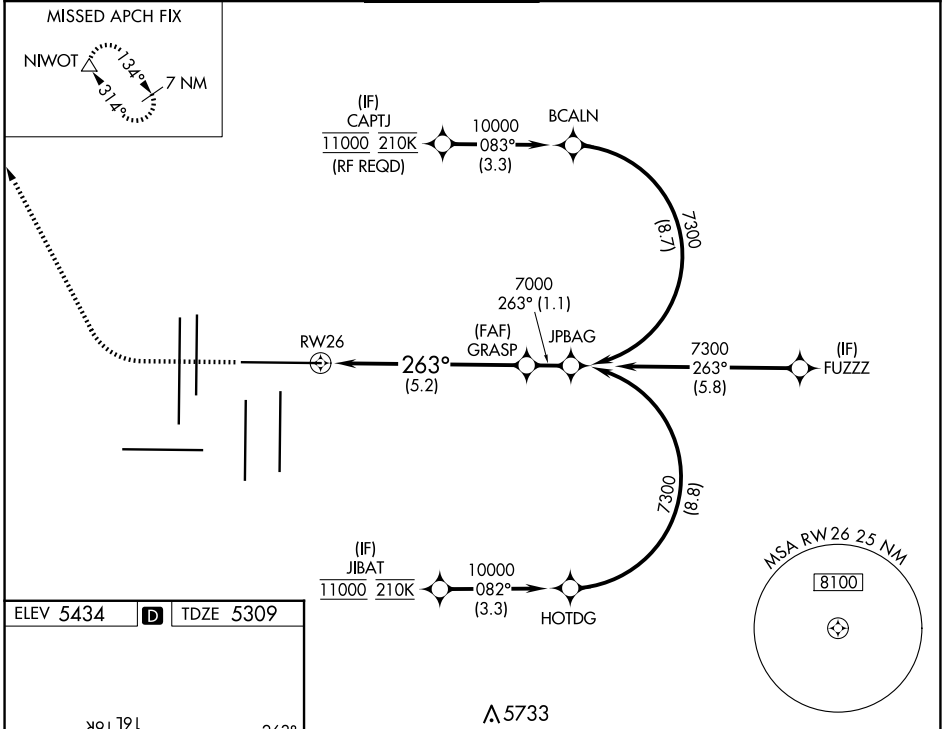
▼ Simultaneous approach authorized. For uncompensated Baro-VNAV systems, procedure NA below -23°C or above 54°C. For inop ALS, increase RNP 0.15 all Cats visibility to RVR 4000, and increase RNP 0.30 all Cats visibility to RVR 4500.

MALSR



MISSED APPROACH: Climb to 6000 then climbing right turn to 10000 direct NIWOT and hold.

D-ATIS 125.6 379.9 (ARR) 134.025 (DEP)	DENVER APP CON 119.3 307.3 (N) 120.35 379.3 (S)	DENVER TOWER 132.35 239.275	GND CON 121.35 379.175 (W) 121.85 377.1 (E)	CLNC DEL 118.75	CPDLC
--	---	---------------------------------------	---	---------------------------	-------



A5733

6000	10000	NIWOT	GRASP	7000
VGSi and RNAV glidepath not coincident (VGSi Angle 3.00/TCH 70).				
See planview for multiple IF locations.				
5.2 NM				
GP 3.00° TCH 55				
CATEGORY	A	B	C	D
RNP 0.15 DA	5566/24 257 (200-½)			
RNP 0.30 DA	5611/24 302 (200-½)			
AUTHORIZATION REQUIRED				

SW-1, 23 JAN 2025 to 20 FEB 2025

SW-1, 23 JAN 2025 to 20 FEB 2025