


WAAS CH 81830 W17A	APP CRS 173°	Rwy Idg 12000 TDZE 5339 Apt Elev 5434
--	------------------------	--

RNAV (GPS) Y RWY 17L

DENVER INTL (DEN)

▼ For uncompensated Baro-VNAV systems, LNAV/VNAV NA below -25°C (-13°F) or above 48°C (119°F). DME/DME RNP-0.3 NA. LNAV procedure NA during simultaneous operations. For inoperative MALSRL increase LNAV Cats C/D visibility to RVR 5500. Use of FD or AP providing RNAV track guidance required during simultaneous operations. Simultaneous approach authorized with Rwy 16L/16R and 17R.
RVR 1800 authorized with use of FD or AP or HUD to DA.

MALSRL

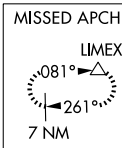
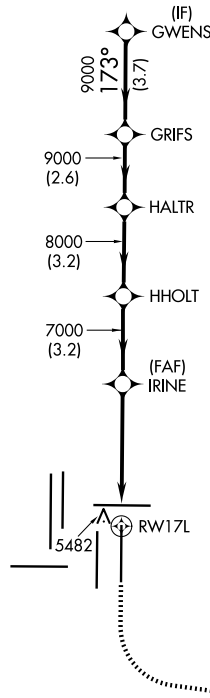
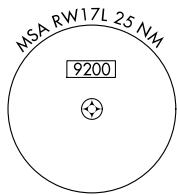


MISSED APPROACH: Climb to 5900 then climbing left turn to 10000 direct LIMEX and hold.

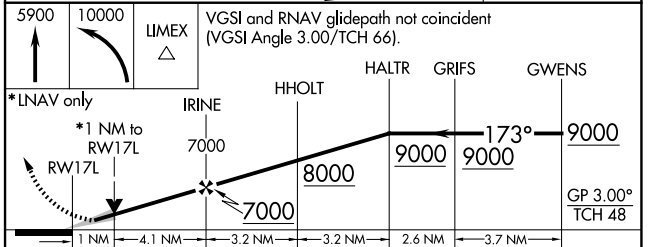
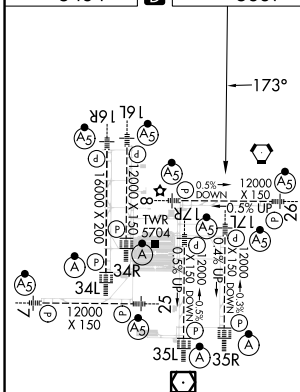
D-ATIS 125.6 379.9 (ARR) 134.025 (DEP)	DENVER APP CON 119.3 307.3 (N) 120.35 379.3 (S)	DENVER TOWER 132.35 239.275	GND CON 121.35 379.175 (W) 121.85 377.1 (E)	CLNC DEL 118.75	CPDLC
--	---	---------------------------------------	---	---------------------------	-------

RADAR REQUIRED

Λ 6260



ELEV 5434	D	TDZE 5339
-----------	----------	-----------



CATEGORY	A	B	C	D
LPV DA#	5539/24 200 (200-½)			
LNAV/VNAV DA	5648/24 309 (300-½)			
LNAV MDA	5700/24 361 (300-½)		5700/35 361 (300-⅝)	

HIRL all Rwys
TDZ/CL Rwys 7, 16L, 16R, 17R,
26, 34L, 34R, 35L, 35R