

|  |                        |  |
|--|------------------------|--|
| WAAS<br>CH <b>40428</b><br><b>W25A</b> | APP CRS<br><b>263°</b> | Rwy Idg <b>12000</b><br>TDZE <b>5355</b><br>Apt Elev <b>5434</b> |
|--|------------------------|--|

# RNAV (GPS) Y RWY 25

DENVER INTL (DEN)

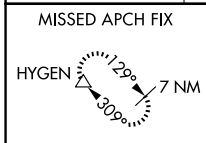
▼ For uncompensated Baro-VNAV systems, LNAV/VNAV NA below -25°C (-13°F) or above 46°C (116°F). Simultaneous approach authorized with Rwy 26. DME/DME RNP-0.3 NA. Use of FD or AP providing track guidance required during simultaneous operations. LNAV procedure NA during simultaneous operations. For inoperative MALSR, increase LNAV/VNAV all Cats visibility to RVR 4500. #RVR 1800 authorized with use of FD or AP or HUD to DA.

MALSR

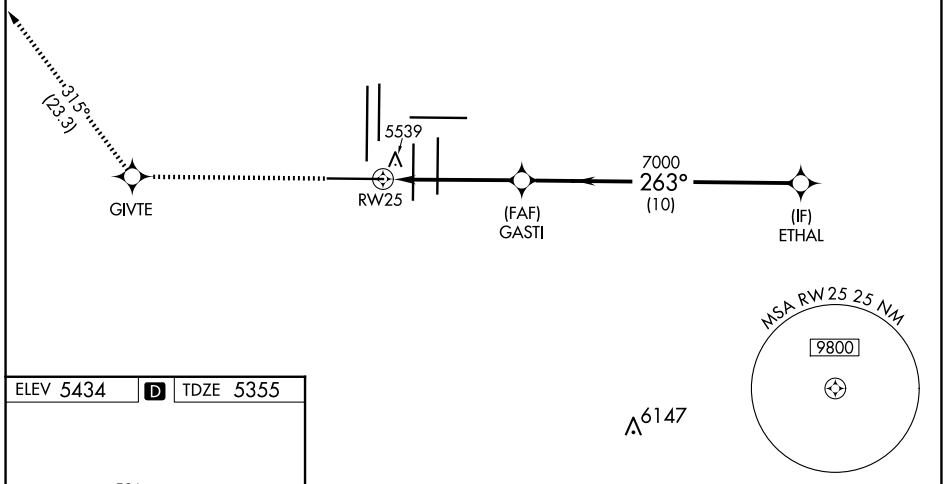


MISSED APPROACH: Climb to 10000 direct GIVTE and on track 315° to HYGEN and hold.

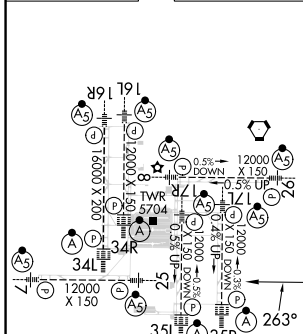
|  |   |                                      |   |                           |       |
|--|---|--------------------------------------|---|---------------------------|-------|
| D-ATIS<br><b>125.6 379.9 (ARR)</b><br><b>134.025 (DEP)</b> | DENVER APP CON<br><b>119.3 307.3 (N)</b><br><b>120.35 379.3 (S)</b> | DENVER TOWER<br><b>128.75 273.55</b> | GND CON<br><b>121.35 379.175 (W)</b><br><b>121.85 377.1 (E)</b> | CLNC DEL<br><b>118.75</b> | CPDLC |
|--|---|--------------------------------------|---|---------------------------|-------|



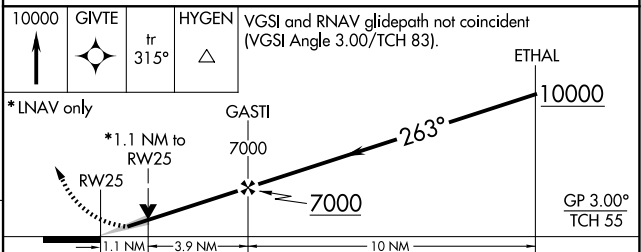
## RADAR REQUIRED



|           |          |           |
|-----------|----------|-----------|
| ELEV 5434 | <b>D</b> | TDZE 5355 |
|-----------|----------|-----------|



HIRL all Rwys  
TDZ/CL Rwys 7, 16L, 16R, 17R,  
26, 34L, 34R, 35L, 35R



| CATEGORY     | A                   | B | C                   | D |
|--------------|---------------------|---|---------------------|---|
| LPV DA#      | 5555/24 200 (200-½) |   |                     |   |
| LNAV/VNAV DA | 5700/30 345 (300-⅝) |   |                     |   |
| LNAV MDA     | 5800/24 445 (400-½) |   | 5800/45 445 (400-⅞) |   |