

WAAS CH 58128 W26A	APP CRS 263°	Rwy Idg 12000 TDZE 5309 Apt Elev 5434
--	------------------------	--

RNAV (GPS) Y RWY 26

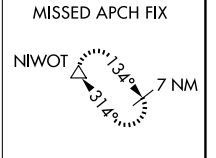
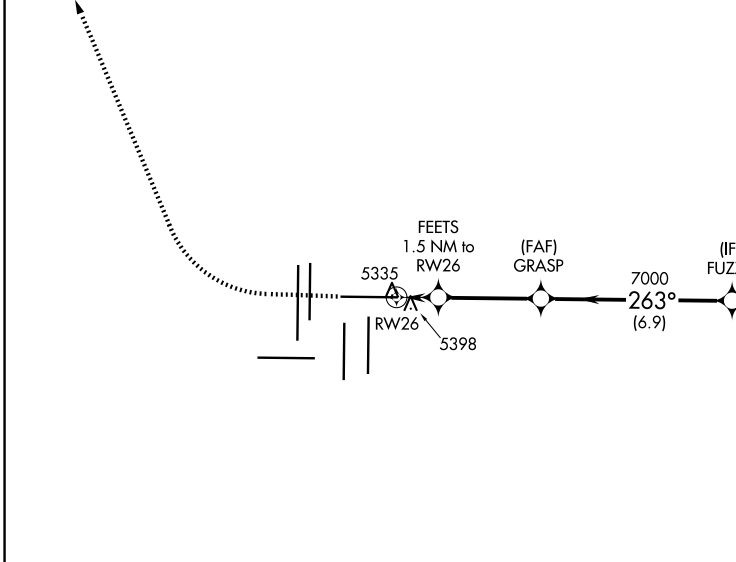
DENVER INTL (DEN)

RNP APCH.
RADAR required.

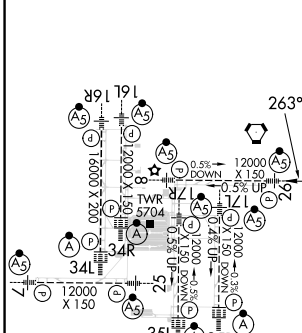
▼ For uncompensated Baro-VNAV systems, LNAV/VNAV NA below -25°C or above 46°C. Simultaneous approach authorized with Rwy 25. For inoperative ALS, increase LNAV/VNAV all Cats visibility to RVR 4000 and LNAV Cat C/D visibility to RVR 5500. LNAV procedure NA during simultaneous operations. Use of FD or AP providing RNAV track guidance required during simultaneous operations.

MALSRL
MISSED APPROACH:
Climb to 6000 then climbing right turn to 11000 direct NIWOT and hold.

D-ATIS 125.6 379.9 (ARR) 134.025 (DEP)	DENVER APP CON 119.3 307.3 (N) 120.35 379.3 (S)	DENVER TOWER 132.35 239.275	GND CON 121.35 379.175 (W) 121.85 377.1 (E)	CLNC DEL 118.75	CPDLC
--	---	---------------------------------------	---	---------------------------	-------

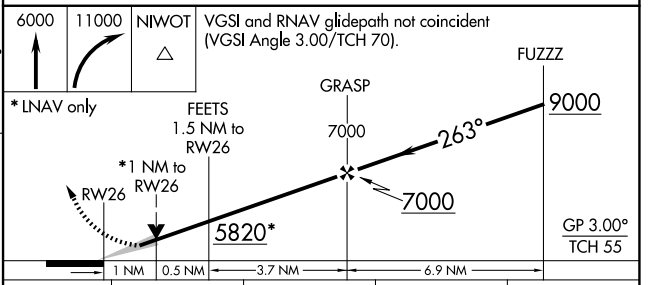


ELEV 5434 **D** TDZE 5309



HIRL all Rwys
TDZ/CL Rwys 7, 16L, 16R, 17R,
26, 34L, 34R, 35L, 35R

△ 6147



CATEGORY	A	B	C	D
LPV DA		5509/18	200 (100-½)	
LNAV/VNAV DA		5559/24	250 (200-½)	
LNAV MDA	5660/24	351 (300-½)	5660/30	351 (300-⅝)

SW-1, 23 JAN 2025 to 20 FEB 2025

SW-1, 23 JAN 2025 to 20 FEB 2025