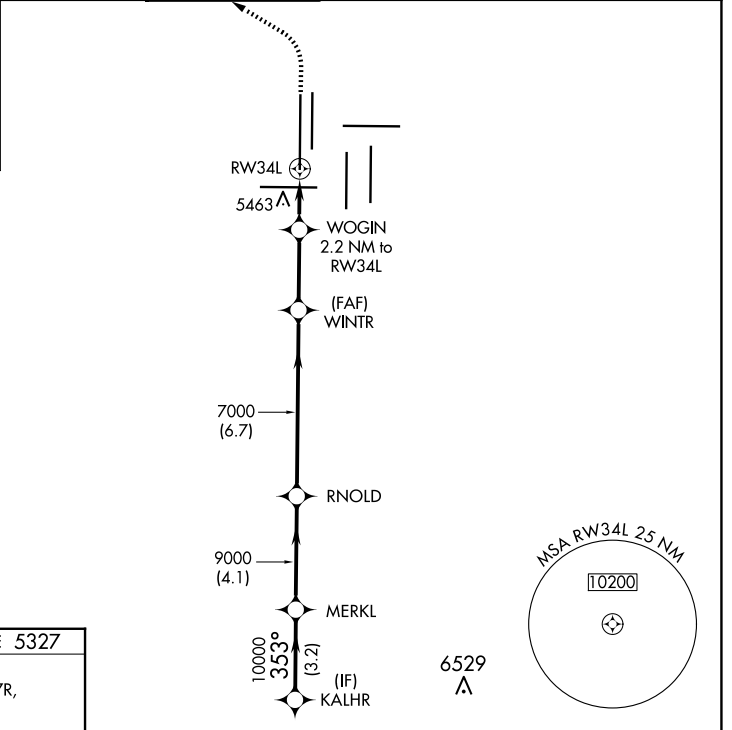
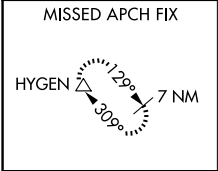


WAAS CH 45619 W34A	APP CRS 353°	Rwy Idg 16000 TDZE 5327 Apt Elev 5434
--	------------------------	--

RNAV (GPS) Y RWY 34L

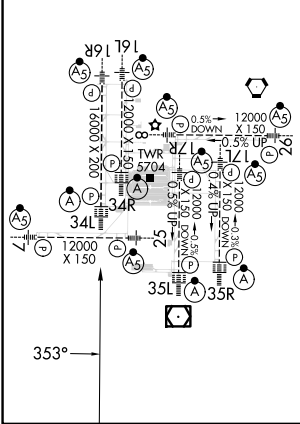
DENVER INTL (DEN)

RNP APCH-GPS.		ALSF-2		MISSED APPROACH: Climb to 5900 then climbing left turn to 10000 direct HYGEN and hold.	
<p>⚠ LNAV procedure NA during simultaneous operations. Use of FD or AP required during simultaneous operations. Simultaneous approach authorized with Rwy 35L/R. For uncompensated Baro-VNAV systems, LNAV/VNAV NA below -22°C or above 54°C.</p>					
D-ATIS 125.6 379.9 (ARR) 134.025 (DEP)	DENVER APP CON 119.3 307.3 (N) 120.35 379.3 (S)	DENVER TOWER 135.3 351.95	GND CON 121.35 379.175 (W) 121.85 377.1 (E)	CLNC DEL 118.75	CPDLC



ELEV 5434	D	TDZE 5327
-----------	----------	-----------

HIRL all Rwys
TDZ/CL Rwys 7, 16L, 16R, 17R,
26, 34L, 34R, 35L, 35R



KALHR		MERKL	RNOLD	WINTR	WOGIN	5900	10000	HYGEN
10000		353°	10000	9000	7000	7000	6060	2.2 NM to RW34L
GP 3.00°		TCH 50		1 NM to RW34L		RW34L		
3.2 NM		4.1 NM		6.7 NM		2.9 NM		1.2 NM
CATEGORY	A		B		C		D	
LPV	DA		5527/18		200 (100-½)			
LNAV/VNAV	DA		5663/26		336 (300-½)			
LNAV	MDA		5720/24		393 (300-½)		5720/35 393 (300-¾)	

SW-1, 23 JAN 2025 to 20 FEB 2025

SW-1, 23 JAN 2025 to 20 FEB 2025