

WAAS CH 90318 W34B	APP CRS 353°	Rwy Idg 12000 TDZE 5354 Apt Elev 5434
--	------------------------	--

RNAV (GPS) Y RWY 34R

DENVER INTL (DEN)

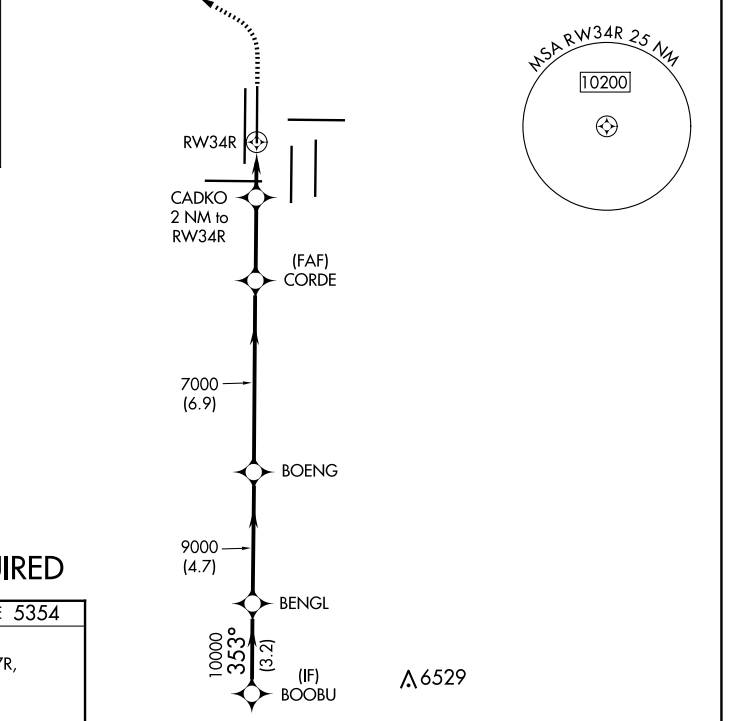
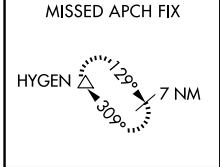
⚠ For uncompensated Baro-VNAV systems, LNAV/VNAV NA below -25°C (-13°F) or above 46°C (114°F). DME/DME RNP-0.3 NA. LNAV procedure NA during simultaneous operations. Simultaneous approach authorized with Rwy 35L/R. Use of FD or AP providing RNAV track guidance required during simultaneous operations.

ALSIF-2



MISSED APPROACH: Climb to 6000 then climbing left turn to 10000 direct HYGEM and hold.

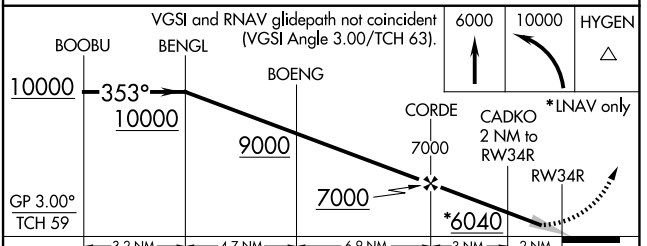
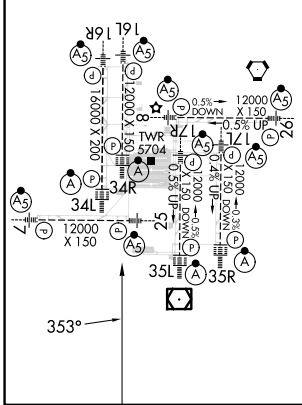
D-ATIS 125.6 379.9 (ARR) 134.025 (DEP)	DENVER APP CON 119.3 307.3 (N) 120.35 379.3 (S)	DENVER TOWER 135.3 351.95	GND CON 121.35 379.175 (W) 121.85 377.1 (E)	CLNC DEL 118.75	CPDLC
--	---	-------------------------------------	---	---------------------------	-------



RADAR REQUIRED

ELEV 5434	D	TDZE 5354
-----------	----------	-----------

HIRL all Rwys
TDZ/CL Rwys 7, 16L, 16R, 17R,
26, 34L, 34R, 35L, 35R



GP 3.00° TCH 59	3.2 NM	4.7 NM	6.9 NM	3 NM	2 NM
CATEGORY	A	B	C	D	
LPV DA		5554/18	200 (200-½)		
LNAV/VNAV DA		5838/60	484 (500-1¼)		
LNAV MDA	5940/24	586 (600-½)		5940-1¼	586 (600-1¼)

SW-1, 23 JAN 2025 to 20 FEB 2025

SW-1, 23 JAN 2025 to 20 FEB 2025