

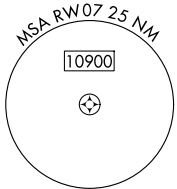
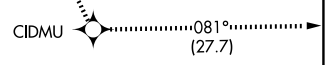
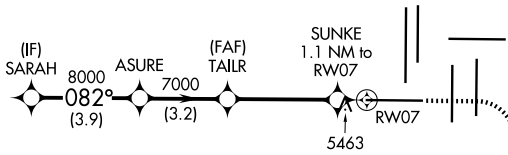
WAAS CH 87128 W07A	APP CRS 082°	Rwy Idg 12000 TDZE 5352 Apt Elev 5434
--	------------------------	--

RNAV (GPS) Y RWY 7

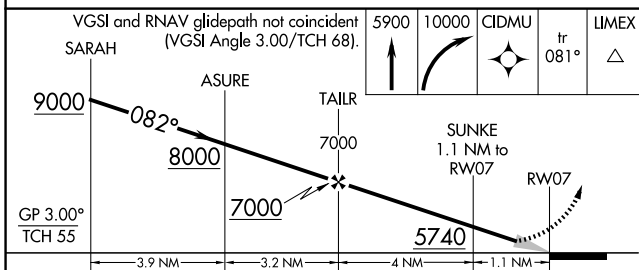
DENVER INTL (DEN)

RNP APCH - GPS.	MALSR	MISSED APPROACH: Climb to 5900 then climbing right turn to 10000 direct CIDMU and on track 081° to LIMEX and hold.
<p>Simultaneous approach authorized. For uncompensated Baro-VNAV systems, LNAV/VNAV NA below -22°C or above 54°C. LNAV procedure NA during simultaneous operations. For inop ALS, increase LNAV/VNAV all Cats visibility to RVR 4500, and LNAV Cat C/D visibility to RVR 5500. Use of FD or AP required during simultaneous operations.</p>		

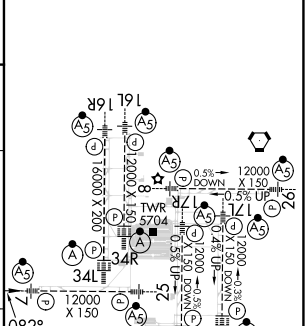
D-ATIS 125.6 379.9 (ARR) 134.025 (DEP)	DENVER APP CON 119.3 307.3 (N) 120.35 379.3 (S)	DENVER TOWER 128.75 273.55	GND CON 121.35 379.175 (W) 121.85 377.1 (E)	CLNC DEL 118.75	CPDLC
--	---	--------------------------------------	---	---------------------------	-------



△6270±



ELEV 5434	D	TDZE 5352
-----------	----------	-----------



CATEGORY	A	B	C	D
LPV DA	5552/18		200 (200-½)	
LNAV/VNAV DA	5626/24		274 (200-½)	
LNAV MDA	5720/24	368 (300-½)	5720/35	368 (300-¾)

HIRL all Rwys
TDZ/CL Rwys 7, 16L, 16R, 17R, 26, 34L, 34R, 35L, 35R

SW-1, 23 JAN 2025 to 20 FEB 2025

SW-1, 23 JAN 2025 to 20 FEB 2025