

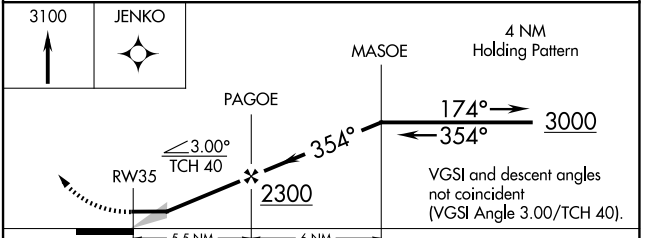
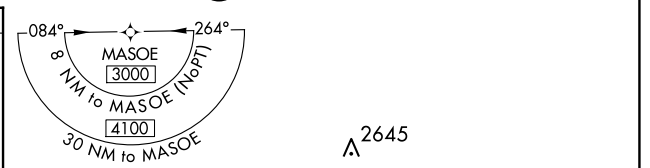
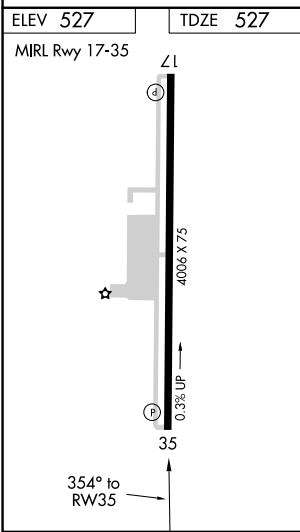
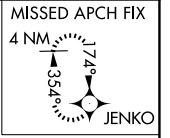
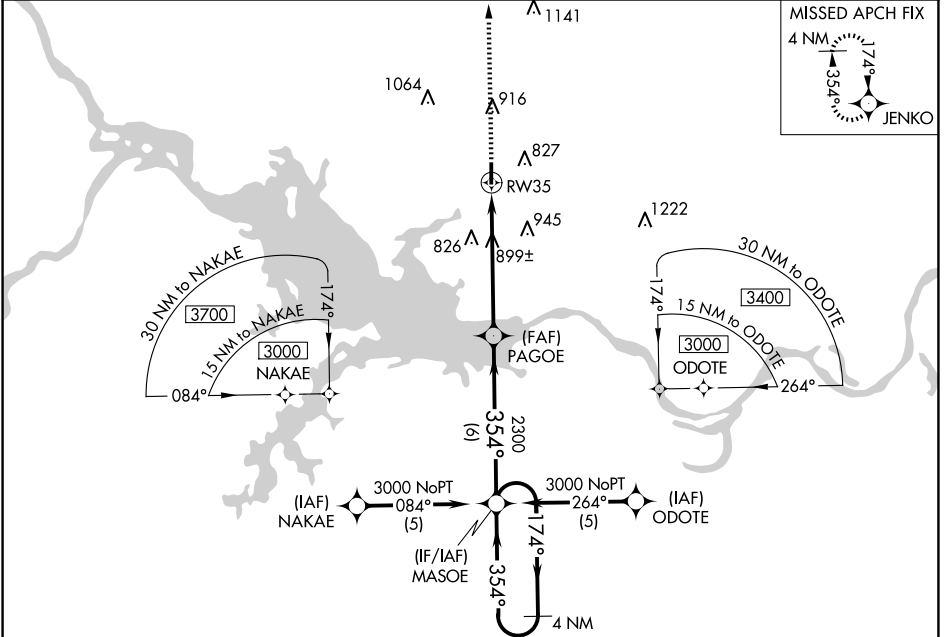
APP CRS 354°	Rwy Idg 4006
	TDZE 527
	Apt Elev 527

RNAV (GPS) RWY 35

SALLISAW MUNI (JSV)

<p>▽ DME/DME RNP-0.3 NA. Night landing: Rwy 17 NA. ▲ NA Helicopter visibility reduction below ¾ SM NA.</p>	<p>MISSED APPROACH: Climb to 3100 direct JENKO WP and hold.</p>
---	--

<p>AWOS-3 118.475</p>	<p>RAZORBACK APP CON * 120.9 343.75</p>	<p>UNICOM 122.7 (CTAF)</p>
-----------------------------------	---	--



CATEGORY	A	B	C	D
LNAV MDA	1160-1 633 (700-1)		1160-1¾ 633 (700-1¾)	NA
CIRCLING	1160-1 633 (700-1)		1300-2¼ 773 (800-2¼)	NA

SC-1, 23 JAN 2025 to 20 FEB 2025

SC-1, 23 JAN 2025 to 20 FEB 2025