

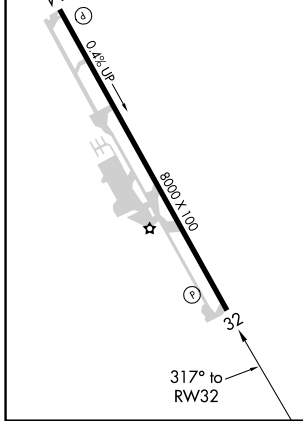
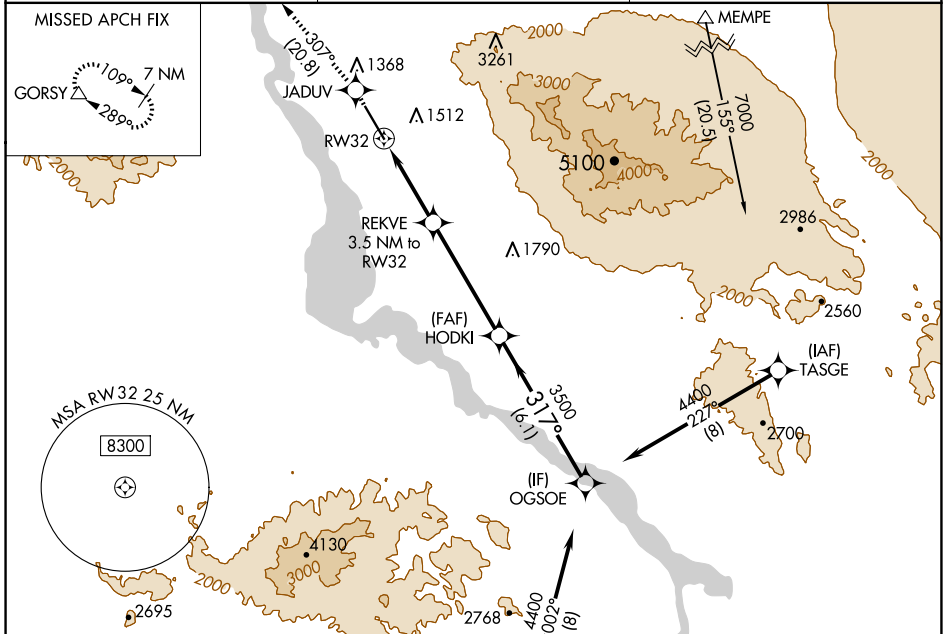
WAAS CH <b>49110</b> <b>W32A</b>	APP CRS <b>317°</b>	Rwy Idg TDZE Apt Elev	<b>8000</b> <b>783</b> <b>783</b>
--	------------------------	-----------------------------	---

# RNAV (GPS) RWY 32

LAKE HAVASU CITY (HII)

RNP APCH.	MISSED APPROACH: Climb to 6300 direct JADUV and track 307° to GORSY and hold, continue climb-in-hold to 6300.
<p>▼ Circling NA northeast of Rwy 14-32.</p> <p>▲ Rwy 32 helicopter visibility reduction below ¾ SM NA.</p>	

AWOS-3 <b>119.025</b>	LOS ANGELES CENTER <b>134.65 360.65</b>	UNICOM <b>122.7 (CTAF) 0</b>
--------------------------	--	---------------------------------



CATEGORY	A	B	C	D
LPV DA	1265-1⅓ 482 (500-1⅓)			
LNAV MDA	1660-1 877 (900-1)	1660-1¼ 877 (900-1¼)	1660-2½ 877 (900-2½)	877 (900-2½)
CIRCLING	1660-1¼ 877 (900-1¼)	1800-3 1017 (1100-3)	2180-3 1397 (1400-3)	

SW-4, 23 JAN 2025 to 20 FEB 2025

SW-4, 23 JAN 2025 to 20 FEB 2025