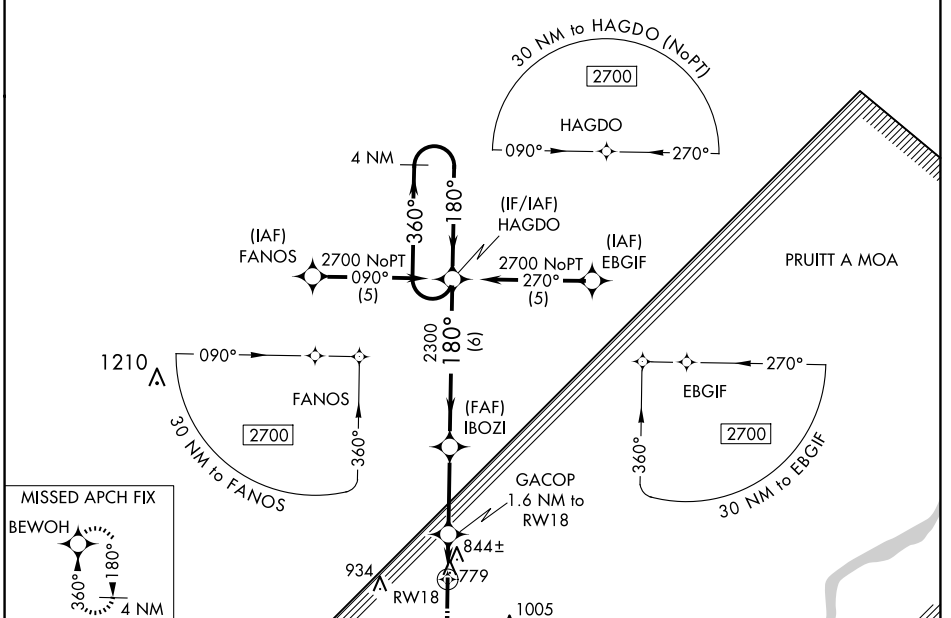


WAAS CH 45912 W18A	APP CRS 180°	Rwy Idg TDZE Apt Elev	5905 734 734
--	------------------------	-----------------------------	---

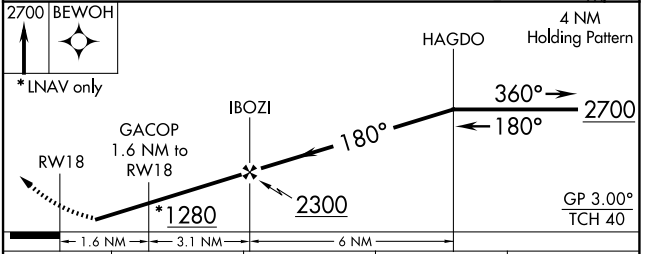
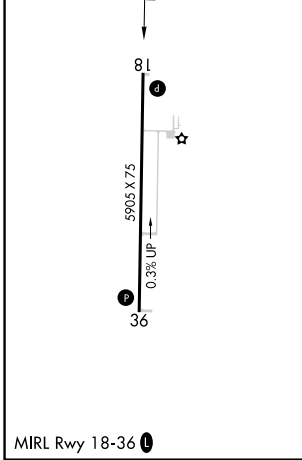
RNAV (GPS) RWY 18

MOUNT STERLING MUNI (I63)

RNP APCH.		MISSED APPROACH: Climb to 2700 direct BEWOH and hold.	
AWOS-3PT 118.325	UIN ASOS 121.425	KANSAS CITY CENTER 126.225 317.775	UNICOM 122.8 (CTAF) 0



ELEV 734	TDZE 734
----------	----------



CATEGORY	A	B	C	D
LPV DA		1066-1¼	332 (400-1¼)	
LNAV/ VNAV DA		1191-1¾	457 (500-1¾)	
LNAV MDA	1160-1	426 (500-1)	1160-1¼	426 (500-1¼)
CIRCLING	1200-1	466 (500-1)	1360-1¾ 626 (700-1¾)	1360-2 626 (700-2)

EC-3, 23 JAN 2025 to 20 FEB 2025

EC-3, 23 JAN 2025 to 20 FEB 2025