

| | | |
|-------------|----------|-------------|
| APP CRS | Rwy Idg | 4000 |
| 173° | TDZE | 915 |
| | Apt Elev | 915 |

RNAV (GPS) RWY 17

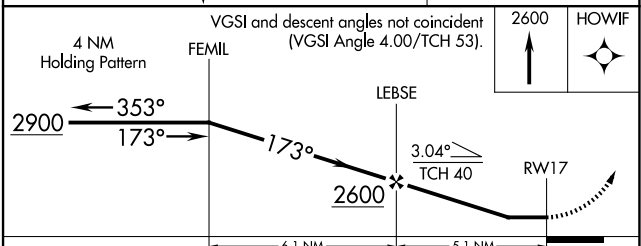
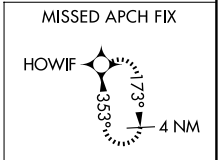
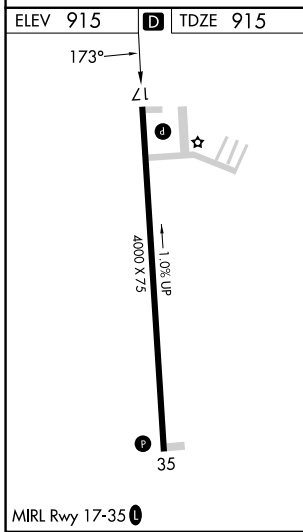
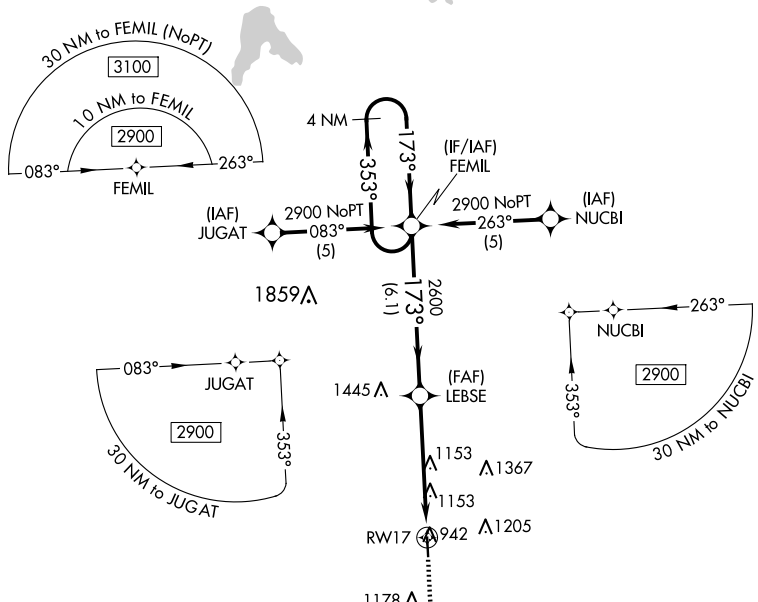
LAWRENCE SMITH MEML (L.R.Y)

RNP APCH.

When local altimeter setting not received, use Charles B Wheeler Downtown altimeter setting: increase all MDAs 100 feet and visibility Cat C ¼ mile. Procedure NA at night. Rwy 17 helicopter visibility reduction below 1 SM NA.

MISSED APPROACH: Climb to 2600 direct HOWIF and hold.

| | | |
|----------------------------|---|---------------------------------|
| AWOS-3PT 119.975 | KANSAS CITY CENTER 125.55 327.0 | UNICOM 123.0 (CTAF) 0 |
|----------------------------|---|---------------------------------|



| CATEGORY | A | B | C | D |
|----------|-----------------------|-----------------------|-------------------------|----|
| LNAV MDA | 1420-1 | 505 (600-1) | 1420-1½ 505 (600-1½) | NA |
| CIRCLING | 1420-1 505 (600-1) | 1460-1 545 (600-1) | 1520-1¾ 605 (700-1¾) | NA |

NC-3, 23 JAN 2025 to 20 FEB 2025

NC-3, 23 JAN 2025 to 20 FEB 2025