

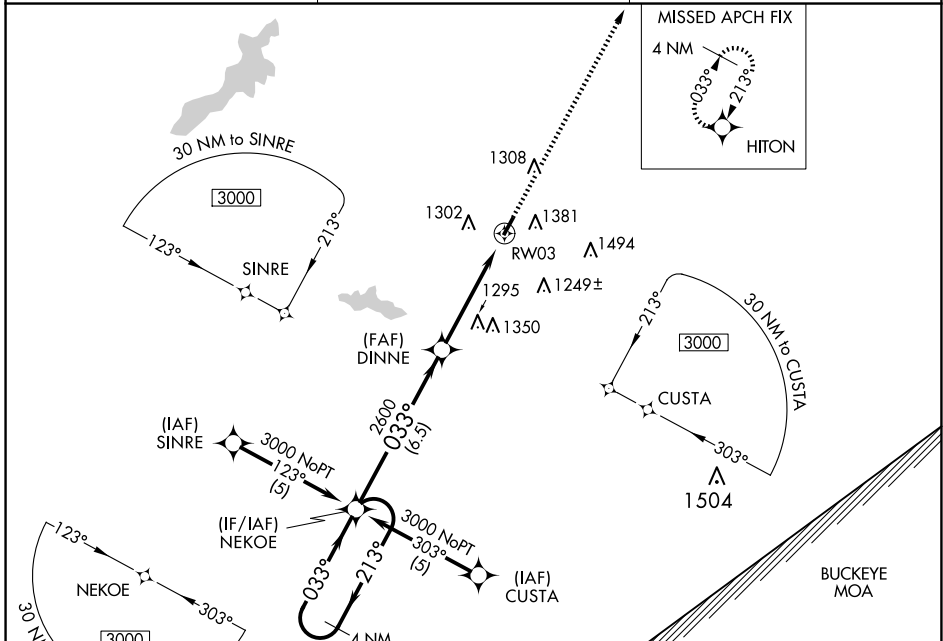
APP CRS	Rwy Idg	3579
033°	TDZE	1033
	Apt Elev	1033

RNAV (GPS) RWY 3

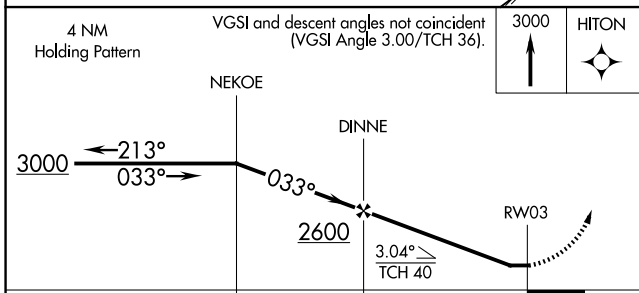
CLINTON FLD (I66)

RNP APCH.	<p>▼ If local altimeter setting not received, use Wilmington Air Park altimeter setting and increase all MDAs 20 feet. Rwy 3 helicopter visibility reduction below 3/4 SM NA.</p> <p>▲ NA</p>	<p>MISSED APPROACH: Climb to 3000 direct HITON and hold.</p>
-----------	---	--

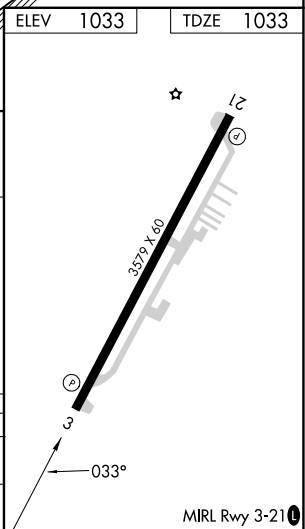
AWOS-3 124.175	COLUMBUS APP CON 118.85 269.275	UNICOM 122.725 (CTAF)
--------------------------	---	---------------------------------



ELEV	1033	TDZE	1033
------	------	------	------



CATEGORY	A	B	C	D
LNVA MDA	1600-1	567 (600-1)	1600-1½ 567 (600-1½)	NA
CIRCLING	1740-1	707 (800-1)	1740-2 707 (800-2)	NA



EC-2, 23 JAN 2025 to 20 FEB 2025

EC-2, 23 JAN 2025 to 20 FEB 2025