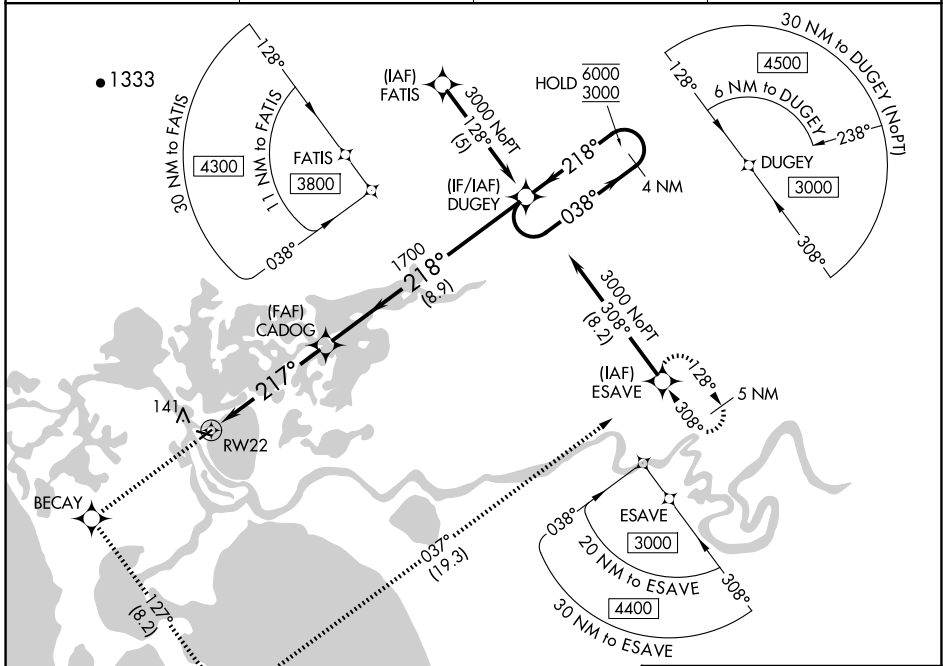


WAAS CH 40404 W22A	APP CRS 217°	Rwy Idg TDZE Apt Elev	3002 17 17
--	------------------------	-----------------------------	---------------------------------------

RNAV (GPS) Z RWY 22

SELAWIK (WLK) (PASK)

RNP APCH. ▼ For uncompensated Baro-VNAV systems, LNAV/VNAV NA below -25°C or above 49°C.		MISSED APPROACH: Climb to 3000 direct BECAY and left turn on track 127° to APACU and left turn on track 037° to ESAVE and hold.	
AWOS-3P 135.65	ANCHORAGE CENTER 119.2 263.0	KOTZEBUE RADIO 122.5	CTAF 122.7



ELEV 17	TDZE 17			
3000 BECAY	APACU	ESAVE	DUGEY	
↑	tr 127°	tr 037°	4 NM Holding Pattern	
CADOG		DUGEY		
RW22		038° → 6000		
1700		← 218° 3000		
GP 3.00°		TCH 45		
5.1 NM		8.9 NM		
CATEGORY	A	B	C	D
LPV DA		267-1	250 (300-1)	
LNAV/VNAV DA		364-1¼	347 (400-1¼)	

