

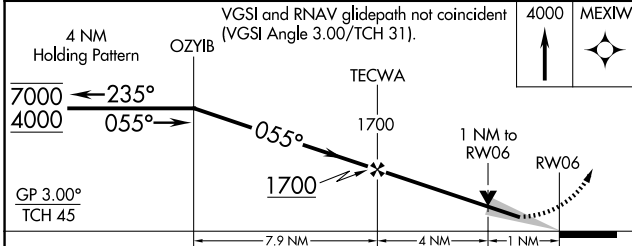
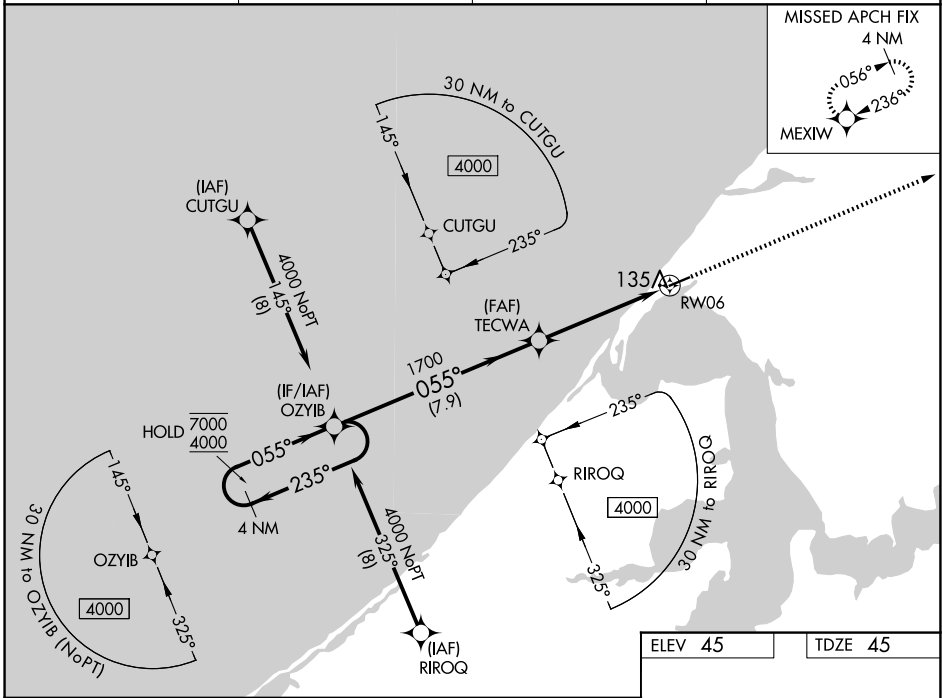
WAAS CH 50542 W06A	APP CRS 055°	Rwy Idg TDZE Apt Elev	4494 45 45
--	------------------------	-----------------------------	---------------------------------------

RNAV (GPS) RWY 6

WAINWRIGHT (AWI) (PAWI)

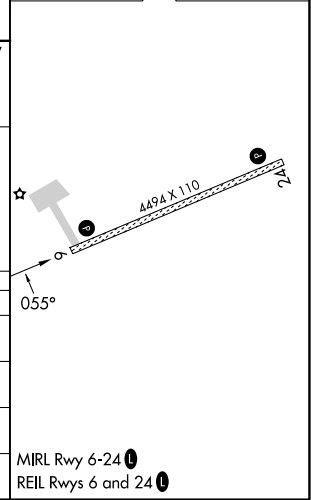
RNP APCH - GPS.	MISSED APPROACH: Climb to 4000 direct MEXIW and hold, continue climb-in-hold to 4000.
<p>For un-compensated Baro-VNAV systems, LNAV/VNAV NA below -20°C or above 54°C.</p>	

ASOS-3 132.25	ANCHORAGE CENTER 135.3 239.25	BARROW RADIO 122.5	CTAF 122.8
-------------------------	---	------------------------------	----------------------



ELEV 45	TDZE 45
---------	---------

CATEGORY	A	B	C	D
LPV DA		295-1	250 (300-1)	
LNAV/VNAV DA		316-1	271 (300-1)	
LNAV MDA		400-1	355 (400-1)	
CIRCLING	460-1 415 (500-1)	500-1 455 (500-1)	500-1½ 455 (500-1½)	600-2 555 (600-2)



AK, 26 DEC 2024 to 20 FEB 2025

AK, 26 DEC 2024 to 20 FEB 2025