

WAAS CH <b>97408</b> <b>W23A</b>	APP CRS <b>225°</b>	Rwy Idg TDZE Apt Elev	<b>5502</b> <b>18</b> <b>18</b>
--	------------------------	-----------------------------	---------------------------------------

# RNAV (GPS) RWY 23

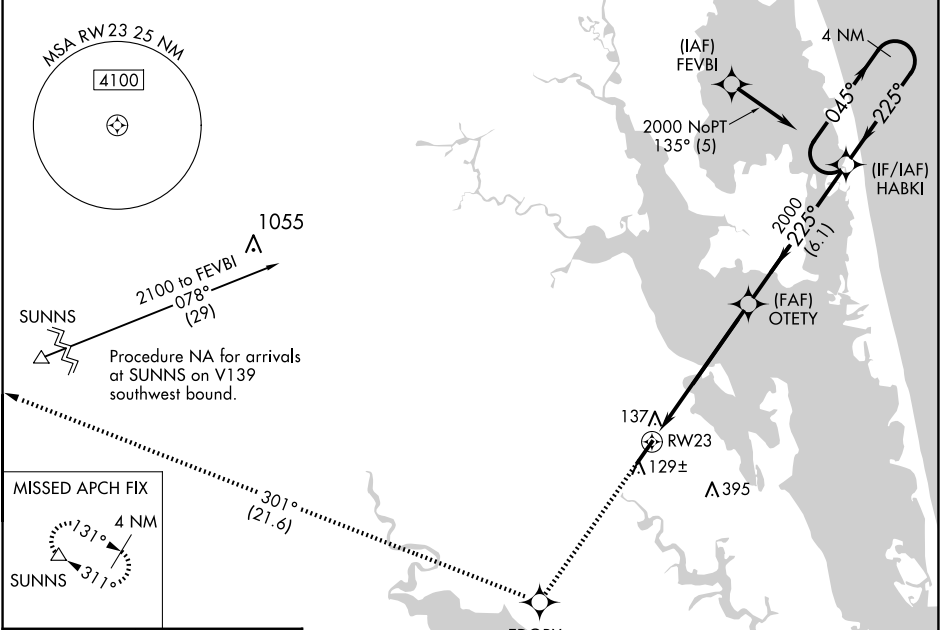
CURRITUCK COUNTY RGNL (ONX)

RNP APCH.

▼ For uncompensated Baro-VNAV systems, LNAV/VNAV NA below -15°C (5°F) or above 49°C (120°F). Rwy 23 helicopter visibility reduction below ¾ SM NA.

▲ MISSED APPROACH: Climb to 2000 direct EDORY and right turn on track 301° to SUNNS and hold.

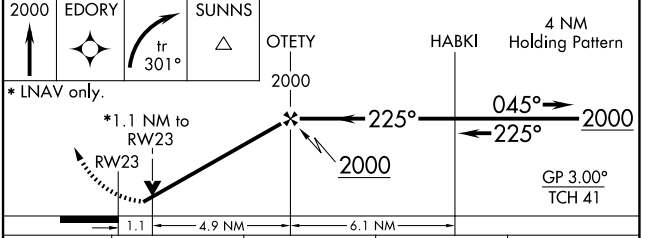
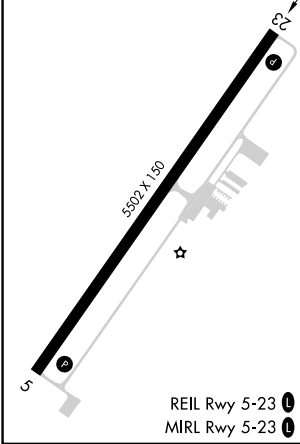
AWOS-3 <b>119.775</b>	OCEANA APP CON <b>123.9 266.8</b>	CTAF <b>122.9 0</b>
--------------------------	--------------------------------------	------------------------



SE-2, 23 JAN 2025 to 20 FEB 2025

SE-2, 23 JAN 2025 to 20 FEB 2025

ELEV 18	TDZE 18
---------	---------



CATEGORY	A	B	C	D
LPV DA		384-1¼	366 (400-1¼)	
LNAV/VNAV DA		424-1½	406 (500-1½)	
LNAV MDA	400-1	382 (400-1)	400-1¼	382 (400-1¼)
CIRCLING	440-1 422 (500-1)	480-1 462 (500-1)	480-1½ 462 (500-1½)	760-2½ 742 (800-2½)