

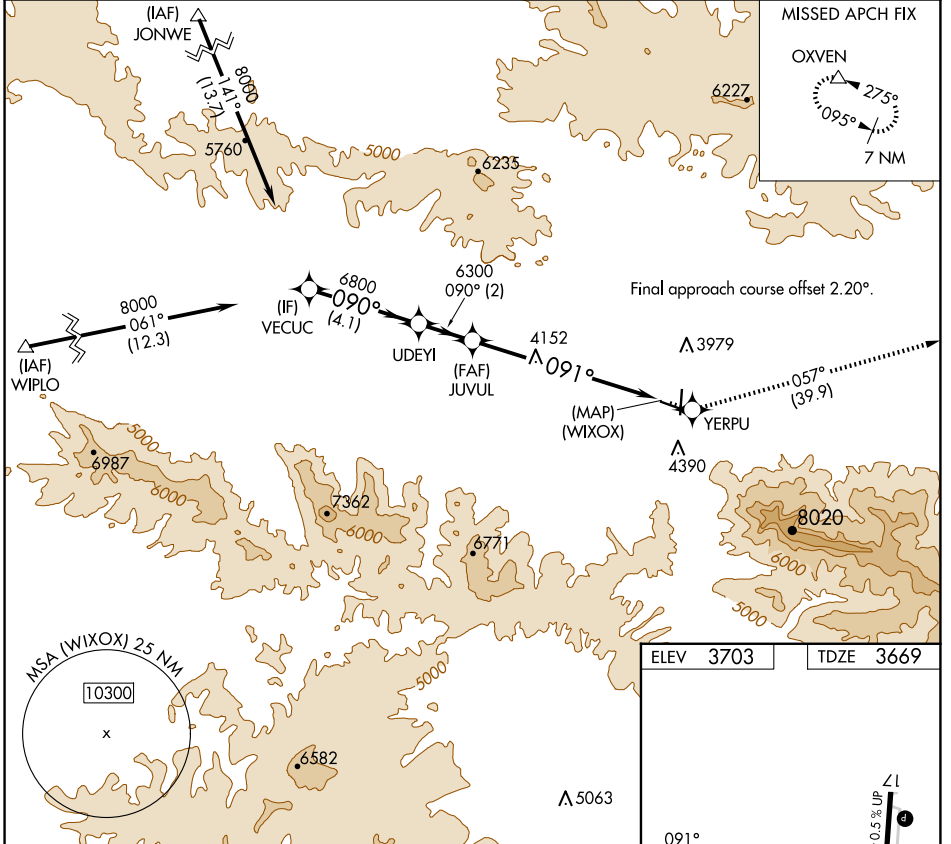
WAAS CH <b>73010</b> <b>W09A</b>	APP CRS <b>091°</b>	Rwy Idg <b>4100</b> TDZE <b>3669</b> Apt Elev <b>3703</b>
--	------------------------	---

# RNAV (GPS) Z RWY 9

GRANT COUNTY RGNL/OGLIVIE FLD (GCD)

RNP APCH - GPS.	MISSED APPROACH: Climb to 12000 direct YERPU and on track 057° to OXVEN and hold, continue climb-in-hold to 12000.
▼ When local altimeter setting not received, procedure NA. Rwy 9 helicopter visibility reduction below 3/4 SM NA.	

AWOS-3 <b>118.375</b>	SEATTLE CENTER <b>128.15 257.75</b>	UNICOM <b>122.8</b> (CTAF) <b>0</b>
--------------------------	--	--



NW-1, 23 JAN 2025 to 20 FEB 2025

NW-1, 23 JAN 2025 to 20 FEB 2025

VECUC		UDEYI		JUVUL		YERPU		OXVEN	
8000		6800		6300		12000		4100 X 60	
GP 3.40°		090°		091°		091°		057°	
TCH 54		4.1 NM		2 NM		7.1 NM		1.0% UP	
CATEGORY		A		B		C		D	
LPV DA		4269-2		600 (600-2)		NA		REIL Rws 17 and 9 MRL Rws 9-27 and 17-35	