

APP CRS	Rwy Idg	4041
013°	TDZE	273
	Apt Elev	273

RNAV (GPS) RWY 2

TICONDEROGA MUNI (4B6)

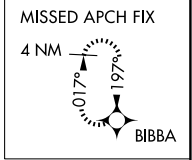
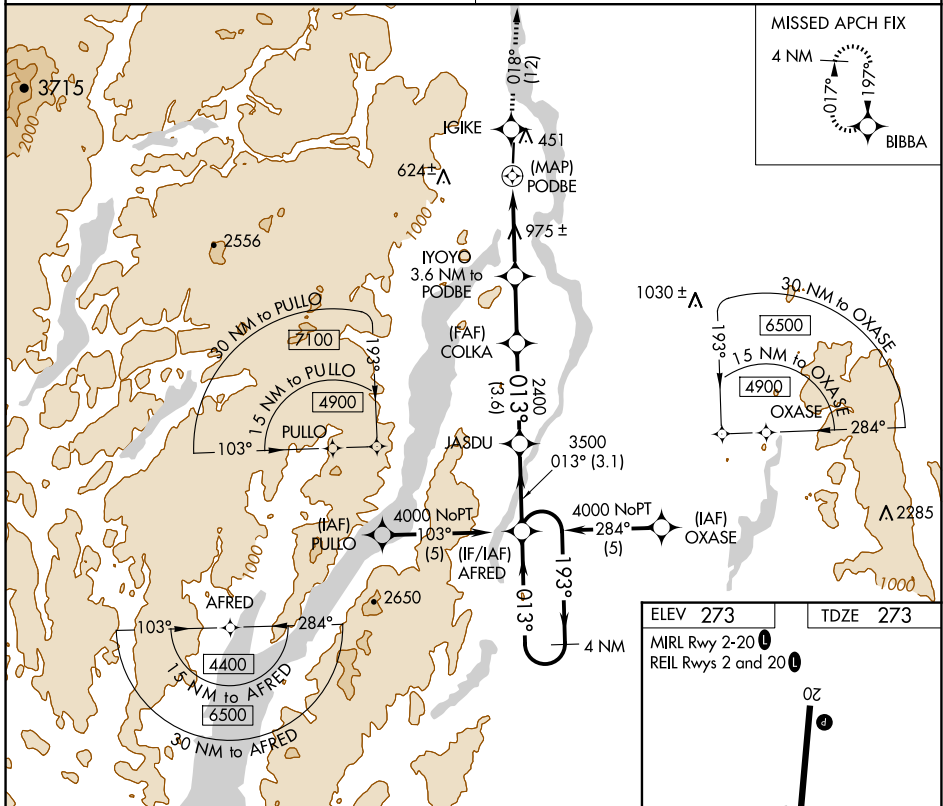
RNP APCH.

NA Use Burlington altimeter setting. Procedure NA at night.
Rwy 2 helicopter visibility reduction below 1 SM NA.

MISSED APPROACH: Climb to 4000 direct IGIKE and on track 018° to BIBBA and hold.

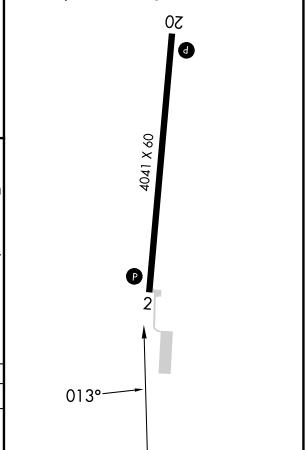
BOSTON CENTER
135.7 282.2

UNICOM
122.8 (CTAF)



ELEV 273	TDZE 273
MIRL Rwy 2-20	
REIL Rws 2 and 20	

4000	IGIKE	tr 018°	BIBBA	VGSI and descent angles not coincident (VGSI Angle 3.00/TCH 46).
↑	◆		◆	4 NM Holding Pattern
CATEGORY	A	B	C	D
LNAV MDA	1520-1¼ 1247 (1300-1¼)	1520-1½ 1247 (1300-1½)	NA	



NE-2, 23 JAN 2025 to 20 FEB 2025

NE-2, 23 JAN 2025 to 20 FEB 2025