

APP CRS
250°

Rwy Idg **5011**
TDZE **520**
Apt Elev **522**

RNAV (GPS) RWY 26

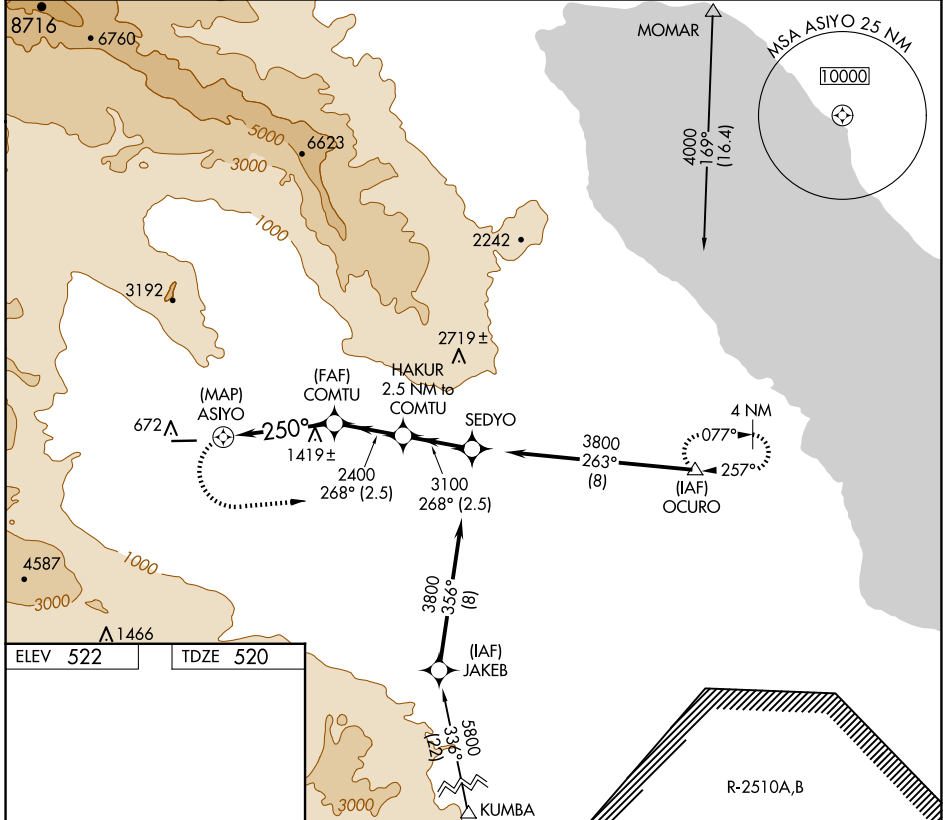
BORREGO VALLEY (L08)

RNP APCH-GPS

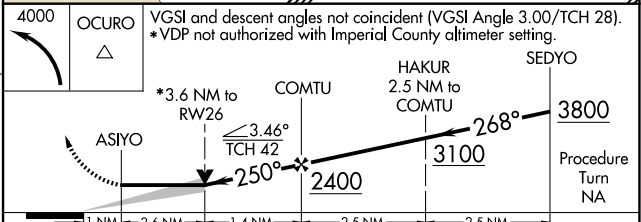
▽ If local altimeter setting not received, use Imperial County altimeter setting and increase all MDAs 580 feet. Circling not authorized south of Rwy 8-26.

△ MISSED APPROACH: Climbing left turn to 4000 direct OCURO WP and hold.

AWOS-3P **126.575** LOS ANGELES CENTER **128.6 291.7** UNICOM **122.8 (CTAF) 0**



ELEV 522 TDZE 520



CATEGORY	A	B	C	D
LNAV MDA	1720-1¼ 1200 (1200-1¼)	1720-1½ 1200 (1200-1½)	1720-3	1200 (1200-3)
CIRCLING	1720-1¼ 1198 (1200-1¼)	1720-1½ 1198 (1200-1½)	1840-3 1318 (1400-3)	NA

SW-3, 23 JAN 2025 to 20 FEB 2025

SW-3, 23 JAN 2025 to 20 FEB 2025