

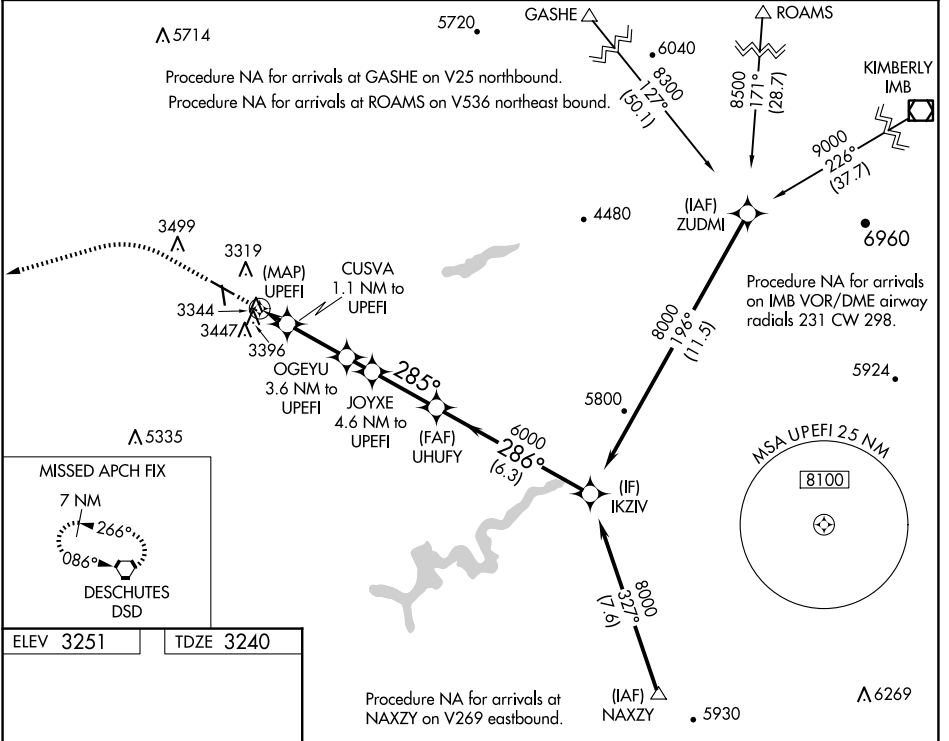
WAAS CH 56235 W29A	APP CRS 285°	Rwy Idg TDZE Apt Elev	5405 3240 3251
--	------------------------	-----------------------------	---

RNAV (GPS) RWY 29

PRINEVILLE (S39)

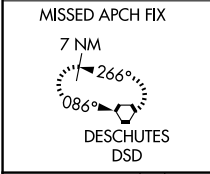
RNP APCH-GPS.	MISSED APPROACH: Climb to 4700 then climbing left turn to 7100 direct DSD VORTAC and hold.
<p>▼ Circling NA for Cat D south of Rwy 11-29.</p> <p>▲ Circling Rwy 15 NA at night.</p>	

AWOS-3PT 118.325	SEATTLE CENTER 126.15 269.475	UNICOM 122.7 (CTAF) 0
----------------------------	---	---------------------------------

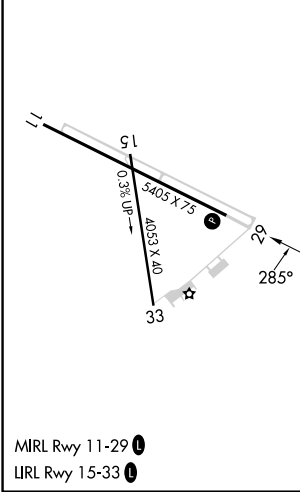


NW-1, 23 JAN 2025 to 20 FEB 2025

NW-1, 23 JAN 2025 to 20 FEB 2025



ELEV 3251	TDZE 3240
-----------	-----------



4700	7100	DSD	IKZIV
↑	↶	◻	
UPEFI	CUSVA 1.1 NM to UPEFI	OGEYU 3.6 NM to UPEFI	JOYXE 4.6 NM to UPEFI
3980	4780	5140	8000
1.1 NM	1.1 NM	2.5 NM	1 NM
2.6 NM	6.3 NM		
CATEGORY	A	B	C
LP MDA	3660-1¼ 420 (500-1¼)		
LNAV MDA	3660-1¼ 420 (500-1¼)		
☑ CIRCLING	3960-1¼ 709 (800-1¼)	4040-1¼ 789 (800-1¼)	4040-2¼ 789 (800-2¼)