

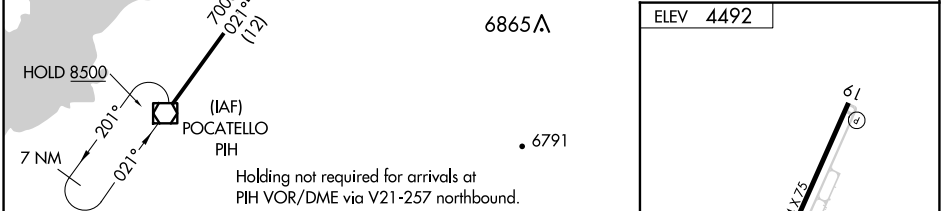
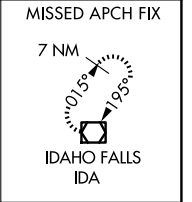
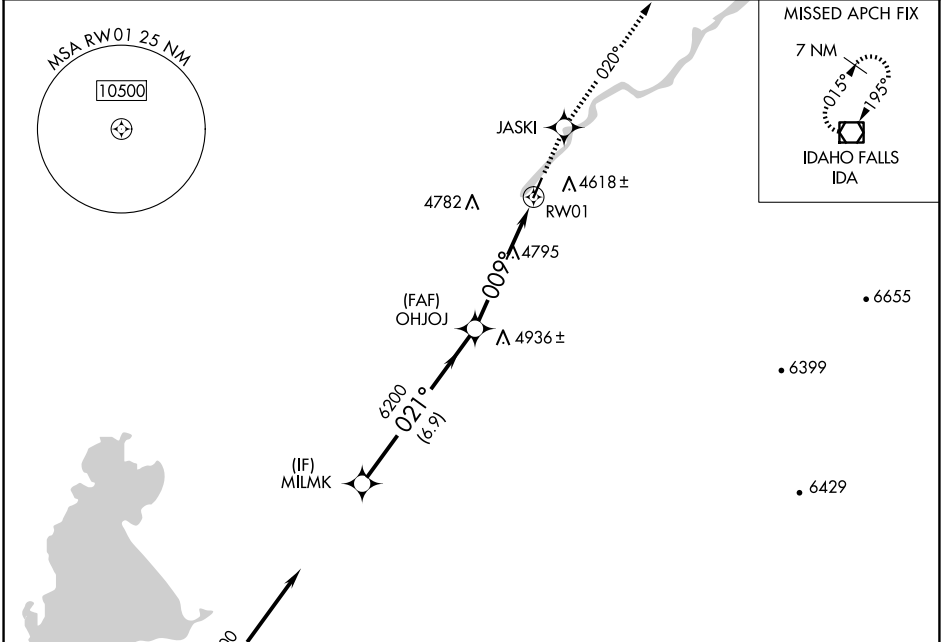
APP CRS	Rwy Idg	N/A
009°	TDZE	N/A
	Apt Elev	4492

RNAV (GPS)-B

MCCARLEY FLD (U02)

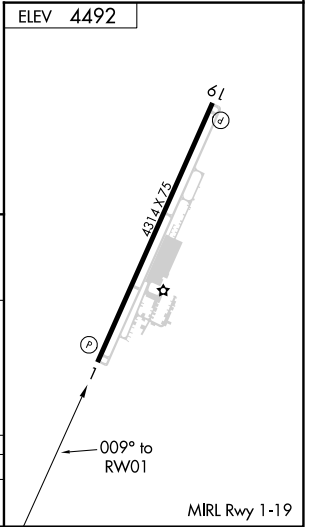
RNP APCH.	MISSED APPROACH: Climb to 7000 direct JASKI and on 020° track to IDA VOR/DME and hold.
<p>▼ Use Pocatello altimeter setting, when not received use Idaho Falls altimeter setting. Helicopter visibility reduction below 1 SM NA.</p> <p>▲ NA</p>	

SALT LAKE CITY CENTER 128.35 239.25	UNICOM 122.8 (CTAF)
---	-------------------------------



VGSI and descent angle not coincident (VGSI Angle 3.00/TCH 39).

MILMK	OHJOJ	JASKI	IDA
7000	6200	7000	020° tr
Procedure Turn NA	3.05° TCH 40		
6.9 NM	5.2 NM		
CATEGORY	A	B	C
CIRCLING	5380-1¼	888 (900-1¼)	5380-2¾ 888 (900-2¾)
			5900-3 1408 (1500-3)



NW-1, 23 JAN 2025 to 20 FEB 2025

NW-1, 23 JAN 2025 to 20 FEB 2025