

APP CRS	Rwy Idg	4000
179°	TDZE	1092
	Apt Elev	1092

RNAV (GPS) RWY 18

BOLIVAR MUNI (M17)

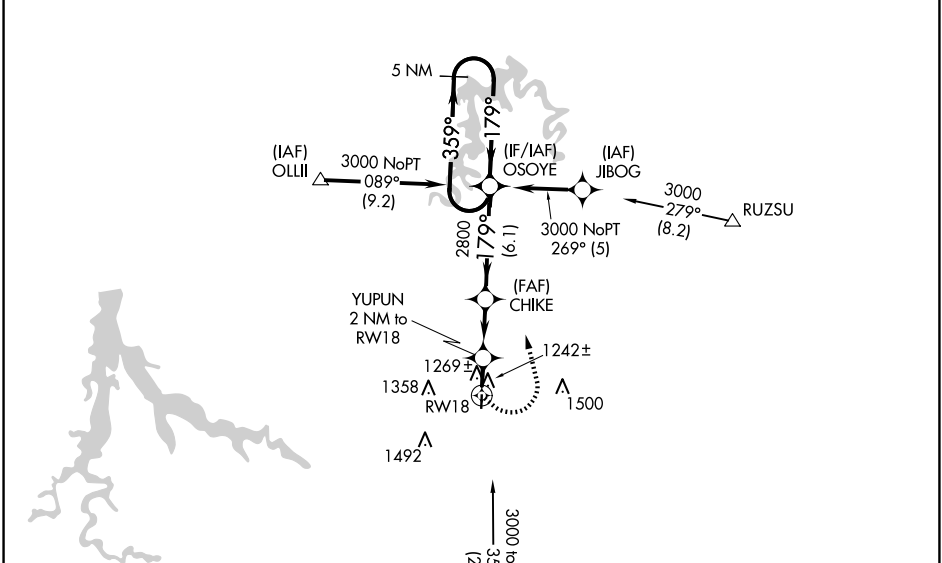
RNP APCH - GPS.

▼ Rwy 18 helicopter visibility reduction below 1 SM NA.
▲ NA Use Springfield-Branson Ntl altimeter setting.
 Straight-in and Circling Rwy 18 NA at night.

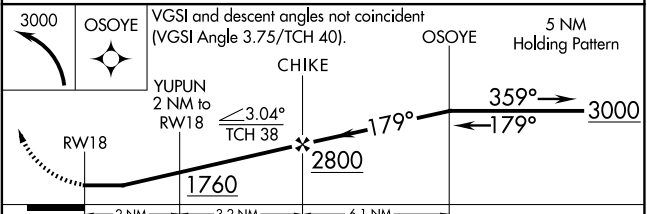
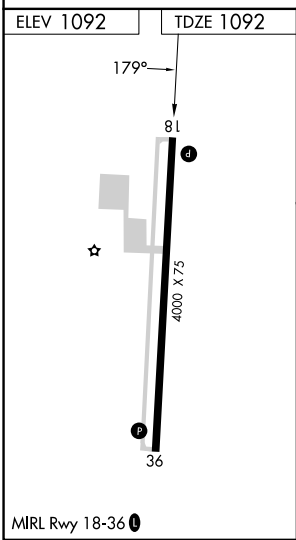
MISSED APPROACH: Climbing left turn to 3000 direct OSOYE and hold.

SPRINGFIELD APP CON
124.95 318.2

UNICOM
123.0 (CTAF) 1



Holding not required for arrivals on SGF VORTAC airway radials 075 CW 272.



CATEGORY	A	B	C	D
LNAV MDA	1600-1	508 (600-1)	1600-1 ³ / ₈ 508 (600-1 ³ / ₈)	NA
CIRCLING	1660-1	568 (600-1)	1740-1 ³ / ₄ 648 (700-1 ³ / ₄)	NA

NC-3, 23 JAN 2025 to 20 FEB 2025

NC-3, 23 JAN 2025 to 20 FEB 2025