

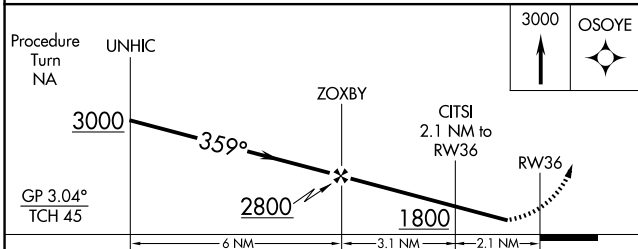
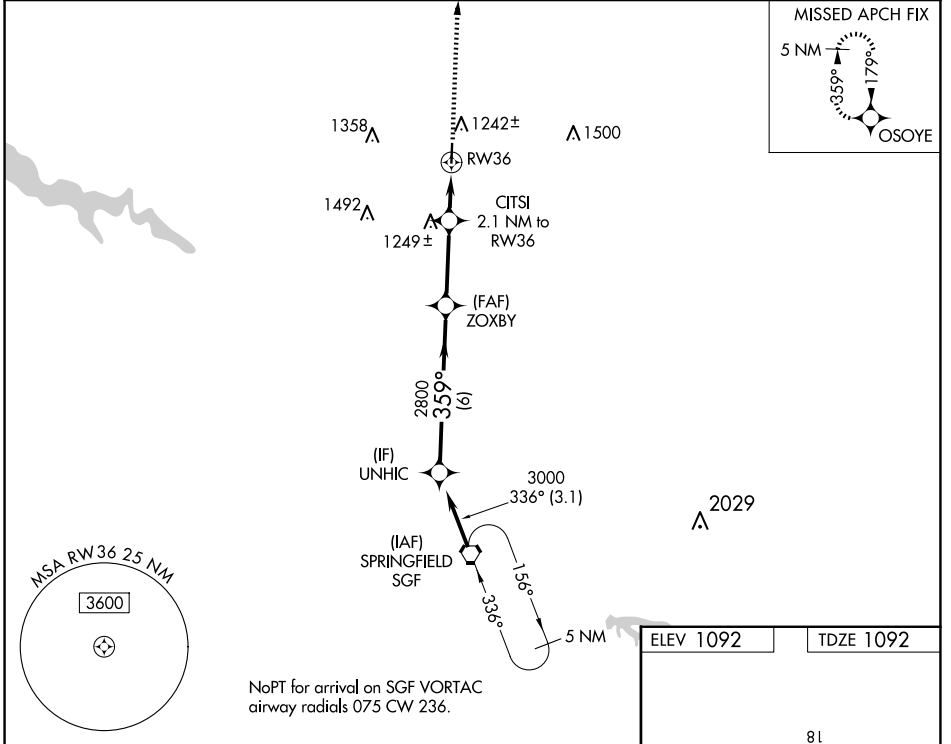
WAAS CH <b>78303</b> <b>W36A</b>	APP CRS <b>359°</b>	Rwy Idg TDZE Apt Elev	<b>4000</b> <b>1092</b> <b>1092</b>
--	------------------------	-----------------------------	---

# RNAV (GPS) RWY 36

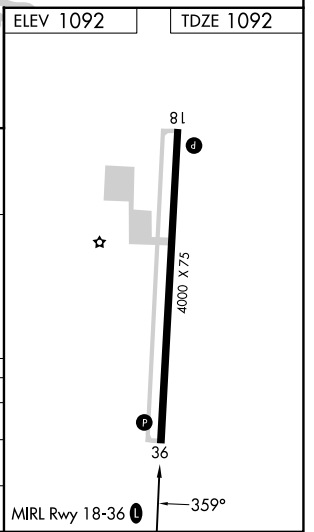
BOLIVAR MUNI (M17)

RNP APCH - GPS.	MISSED APPROACH: Climb to 3000 direct OSOYE and hold.
<p>▼ Rwy 36 helicopter visibility reduction below 3/4 SM NA.</p> <p>▲ NA Use Springfield-Branson Ntl altimeter setting. Circling Rwy 18 NA at night.</p>	

SPRINGFIELD APP CON <b>124.95 318.2</b>	UNICOM <b>123.0 (CTAF) 1</b>
--	---------------------------------



CATEGORY	A	B	C	D
LPV DA	1448-1 1/8 356 (400-1 1/8)			NA
LNAV MDA	1580-1 488 (500-1)		1580-1 1/4 488 (500-1 1/4)	NA
CIRCLING	1660-1 568 (600-1)		1740-1 3/4 648 (700-1 3/4)	NA



NC-3, 23 JAN 2025 to 20 FEB 2025

NC-3, 23 JAN 2025 to 20 FEB 2025