

|  |                        |                             |   |
|--|------------------------|-----------------------------|---|
| WAAS<br>CH <b>70537</b><br><b>W19A</b> | APP CRS<br><b>207°</b> | Rwy Idg<br>TDZE<br>Apt Elev | <b>7100</b><br><b>5286</b><br><b>5318</b> |
|--|------------------------|-----------------------------|---|

# RNAV (GPS) RWY 19

RICHFIELD MUNI (RIF')

RNP APCH-GPS.

▼ Rwy 19 helicopter visibility reduction below 3/4 SM NA. When local altimeter setting not received, procedure NA.

⚠ NA

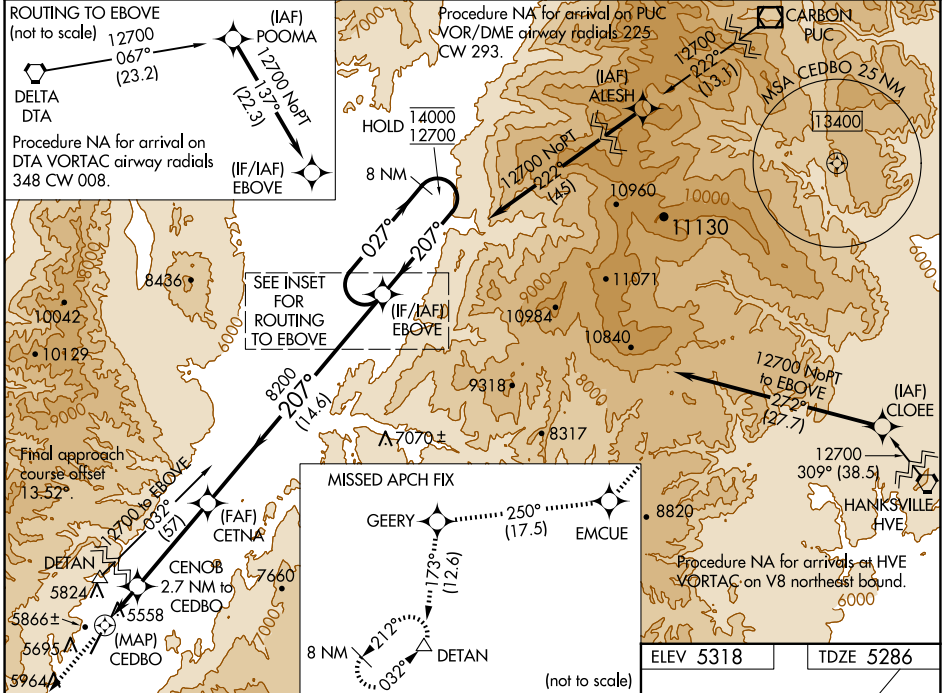
❄ -12°C

MISSED APPROACH: Climb to 2000 direct EMCUE, and track 250° to GEERY, and track 173° to DETAN and hold.

\*Missed approach requires minimum climb of 380 feet per NM to 9600.

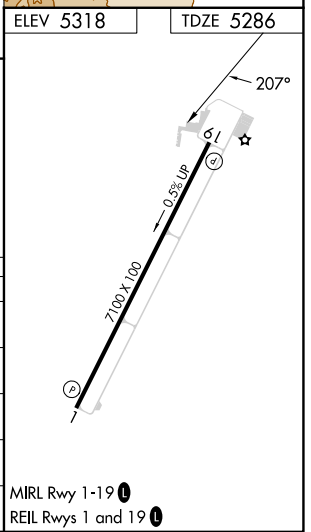
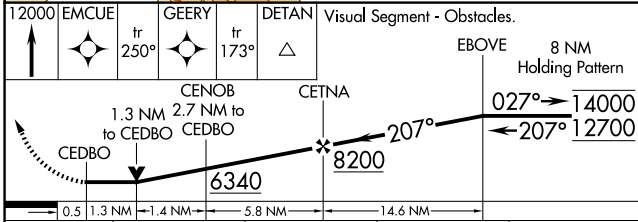
#Missed approach requires minimum climb of 390 feet per NM to 9600.

|                          |   |                                 |
|--------------------------|---|---------------------------------|
| AWOS-3<br><b>133.375</b> | SALT LAKE CITY CENTER<br><b>125.575 379.275</b> | UNICOM<br><b>122.8 (CTAF) 0</b> |
|--------------------------|---|---------------------------------|



SW-4, 23 JAN 2025 to 20 FEB 2025

SW-4, 23 JAN 2025 to 20 FEB 2025



| CATEGORY  | A                               | B                               | C                             | D  |
|-----------|---------------------------------|---------------------------------|-------------------------------|----|
| LP MDA*   | 5880-1                          | 594 (600-1)                     | 5880-1 3/4<br>594 (600-1 3/4) | NA |
| LP MDA    | 7340-1 1/4<br>2054 (2100-1 1/4) | 7340-1 1/2<br>2054 (2100-1 1/2) | 7340-3<br>2054 (2100-3)       | NA |
| LNAV MDA# | 6340-1 1/4<br>1054 (1100-1 1/4) | 6340-1 1/2<br>1054 (1100-1 1/2) | 6340-3<br>1054 (1100-3)       | NA |
| LNAV MDA  | 7440-1 1/4<br>2154 (2200-1 1/4) | 7440-1 1/2<br>2154 (2200-1 1/2) | 7440-3<br>2154 (2200-3)       | NA |
| CIRCLING  | 7440-1 1/4<br>2122 (2200-1 1/4) | 7440-1 1/2<br>2122 (2200-1 1/2) | 7440-3<br>2122 (2200-3)       | NA |

MIRL Rwy 1-19 0

REIL Rws 1 and 19 0