

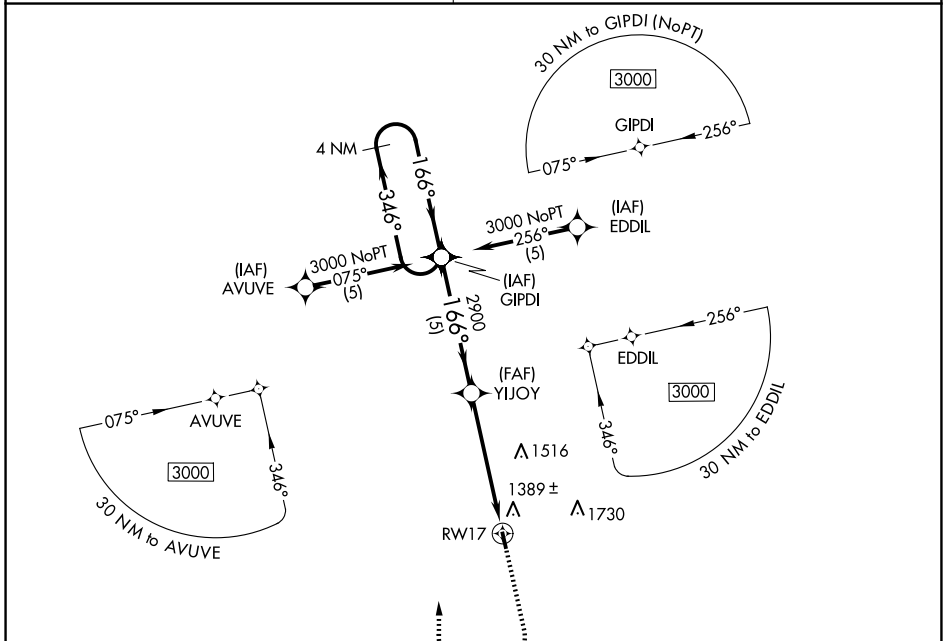
APP CRS	Rwy Idg	<b>2998</b>
<b>166°</b>	TDZE	<b>1241</b>
	Apt Elev	<b>1241</b>

# RNAV (GPS) RWY 17

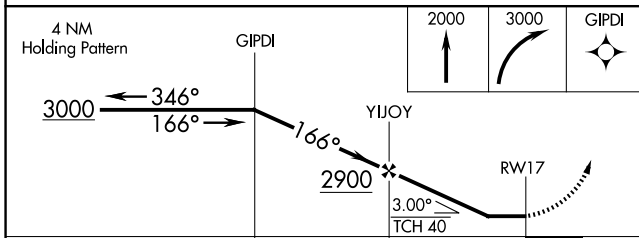
SALEM MEML (K33)

RNP APCH.	Use Rolla Nil altimeter setting.	MISSED APPROACH: Climb to 2000 then climbing right turn to 3000 direct GIPDI WP and hold.
▼	Rwy 17 helicopter visibility reduction below 3/4 SM NA.	

KANSAS CITY CENTER <b>128.35 284.675</b>	CTAF <b>122.9</b>
---	----------------------



ELEV 1241	TDZE 1241
166° to RWY 17	
2998 x 60	
0.7% up	
35	



CATEGORY	A	B	C	D
LNAV	1740-1	499 (500-1)		NA
CIRCLING	1840-1	599 (600-1)		NA

MIRL Rwy 17-35  
REIL Rwy 17 and 35

NC-3, 23 JAN 2025 to 20 FEB 2025

NC-3, 23 JAN 2025 to 20 FEB 2025