

APP CRS 047°	Rwy Idg TDZE Apt Elev	6027 2454 2454
------------------------	-----------------------------	---

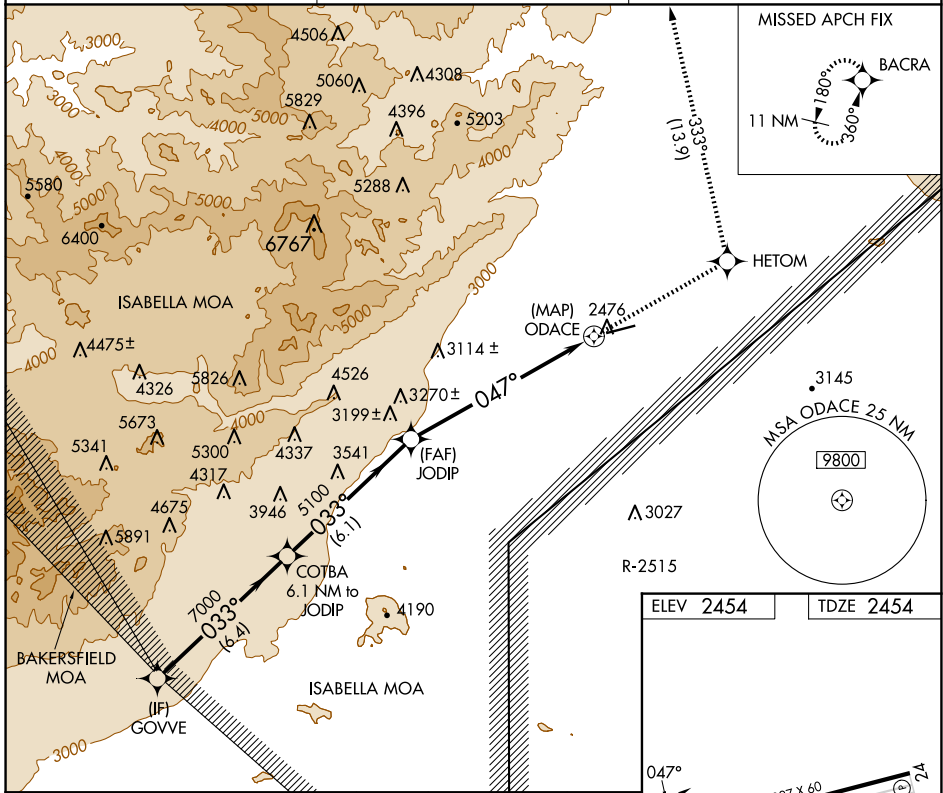
RNAV (GPS) RWY 6

CALIFORNIA CITY MUNI (L71)

RNP APCH.
RADAR required.
<p>▽ If local altimeter setting not received, use Edwards AFB altimeter setting and increase all MDAs 60 feet; if neither received, procedure not authorized.</p> <p>▲ NA</p>

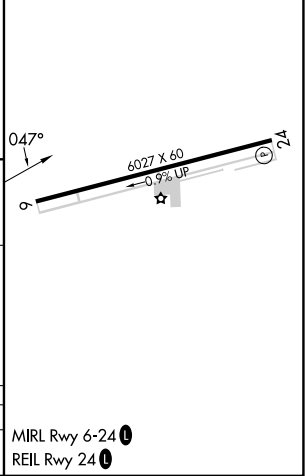
MISSED APPROACH: Climb to 9000 direct HETOM and via 333° track to BACRA and hold, continue climb-in-hold to 9000.

AWOS-1 120.875	JOSHUA APP CON 133.65 348.7	UNICOM 122.7 (CTAF) 0
--------------------------	---------------------------------------	---------------------------------



GOVVE	COTBA 6.1 NM to JODIP	9000	HETOM	333° tr	BACRA
Procedure Turn NA	JODIP	7000	3.06° TCH 50	ODACE	
	6.4 NM	6.1 NM	7.5 NM	0.5	
CATEGORY	A	B	C	D	
LNAV MDA	3660-1¼ 1206 (1300-1¼)	3660-1½ 1206 (1300-1½)	3660-3 1206 (1300-3)	NA	

ELEV 2454	TDZE 2454
-----------	-----------



SW-3, 23 JAN 2025 to 20 FEB 2025

SW-3, 23 JAN 2025 to 20 FEB 2025

MIRL Rwy 6-24 0
REIL Rwy 24 0