

WAAS CH <b>86640</b> <b>W14A</b>	APP CRS <b>144°</b>	Rwy Idg <b>5000</b> TDZE <b>18</b> Apt Elev <b>18</b>
--	------------------------	---

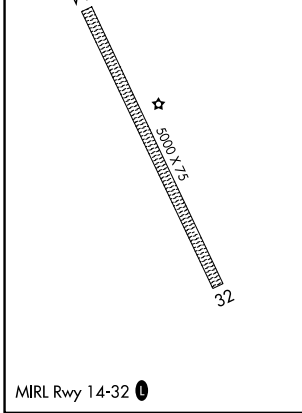
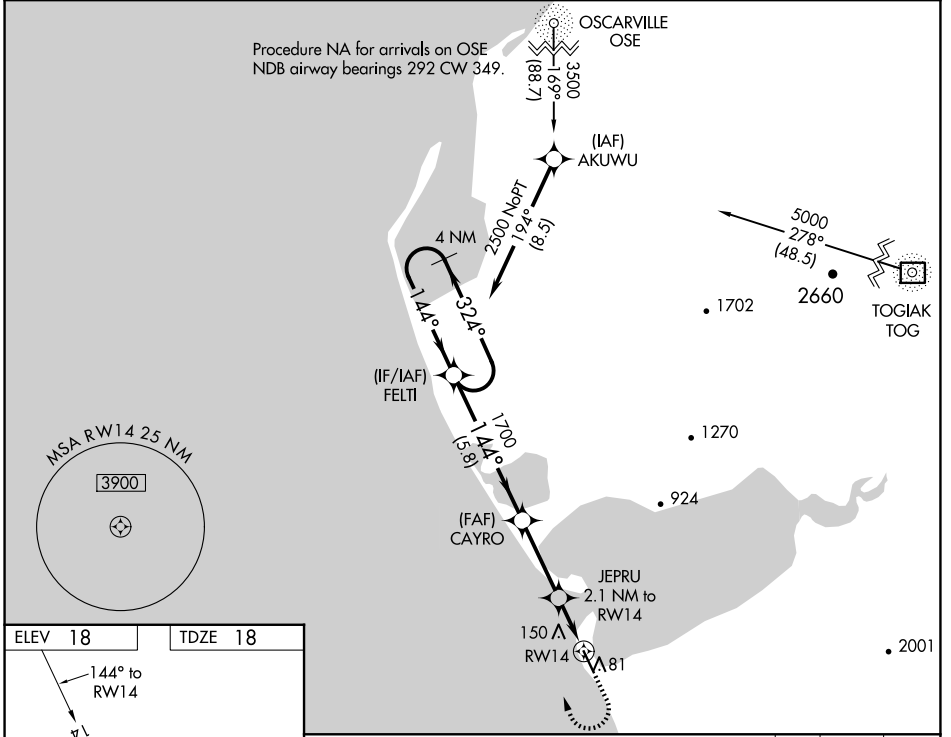
# RNAV (GPS) RWY 14

PLATINUM (PTU)(PAPM)

**⚠** For uncompensated Baro-VNAV systems, LNAV/VNAV NA below -20°C (-4°F) or above 54°C (130°F). Baro-VNAV and VDP NA when using Togiak altimeter setting. DME/DME RNP-0.3 NA. When local altimeter setting not received, use Togiak altimeter setting: increase LPV DA to 371 feet; increase LNAV/VNAV DA to 424 feet and all Cats visibilities  $\frac{3}{8}$  SM; increase all MDA 120 feet and increase LNAV and Circling Cat C visibility  $\frac{1}{4}$  SM.

**MISSED APPROACH:** Climb to 420 then Climbing right turn to 2500 direct FELTI and hold.

AWOS-3P <b>118.375</b>	ANCHORAGE CENTER <b>124.2 251.1</b>	UNICOM <b>122.8 (CTAF) 0</b>
---------------------------	--	---------------------------------



4 NM Holding Pattern FELTI 2500 144° 324° GP 3.00° TCH 40	CAYRO 1700 *720 *1.1 NM to RWY 14		JEPRU 2.1 NM to RWY 14 *1.1 NM to RWY 14	FELTI 420 2500 FELTI
	5.8 NM	3.1 NM	1 NM	1.1 NM
CATEGORY	A	B	C	D
LPV DA	268-1 250 (300-1)			NA
LNAV/VNAV DA	321-1 303 (400-1)			NA
LNAV MDA	400-1	382 (400-1)	400-1 $\frac{1}{8}$ 382 (400-1 $\frac{1}{8}$ )	NA
<b>C</b> CIRCLING	460-1 442 (500-1)	480-1 462 (500-1)	520-1 $\frac{1}{2}$ 502 (600-1 $\frac{1}{2}$ )	NA

AK, 26 DEC 2024 to 20 FEB 2025

AK, 26 DEC 2024 to 20 FEB 2025