

WAAS CH <b>87033</b> <b>W17A</b>	APP CRS <b>173°</b>	Rwy Idg TDZE Apt Elev	<b>3200</b> <b>20</b> <b>20</b>
--	------------------------	-----------------------------	---------------------------------------

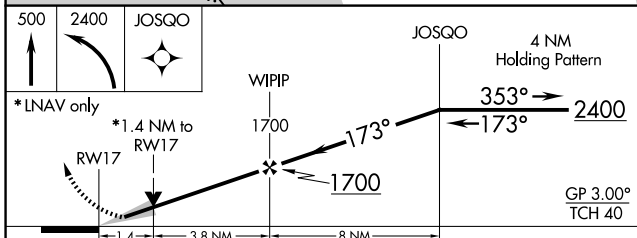
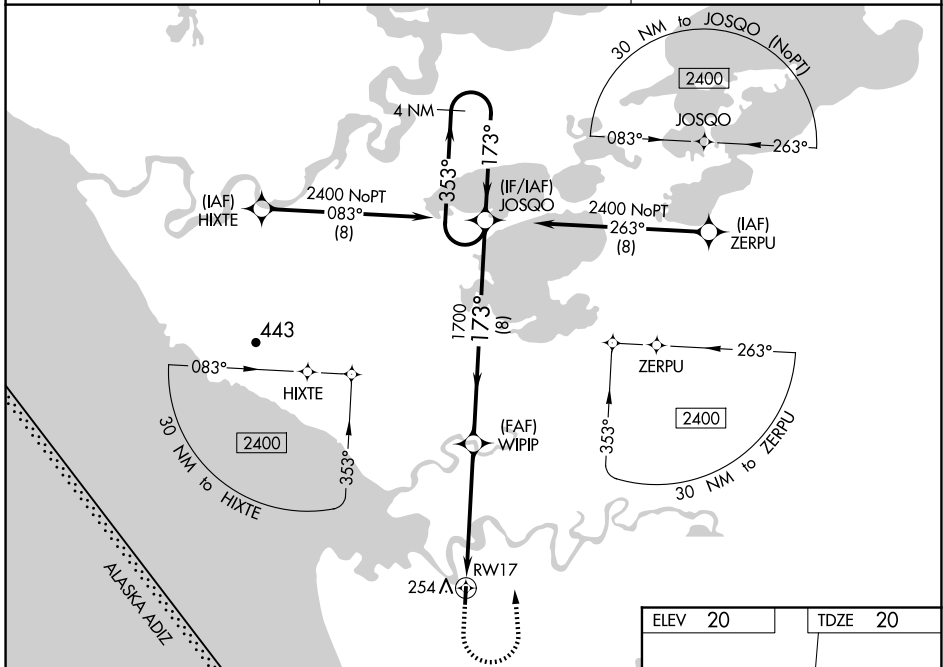
# RNAV (GPS) RWY 17

KIPNUK (IIK) (PAKI)

**⚠** Baro-VNAV NA when using Toksook Bay altimeter setting. For uncompensated Baro-VNAV systems, LNAV/VNAV NA below -20°C (-4°F) or above 54°C (130°F). DME/DME RNP-0.3 NA. Procedure NA at night. VDP NA when using Toksook Bay altimeter setting. When local altimeter setting not received use Toksook Bay altimeter setting; increase LPV DA to 389 feet and visibility all Cats ¼ SM. Increase LNAV/VNAV DA to 553 feet and visibility all Cats ½ SM. Increase all MDA 120 feet. Increase LNAV Cat C and D visibility to 1¼ SM, Circling Cat C to 2 SM, Cat D to 2¼ SM.

**MISSED APPROACH:**  
Climb to 500 then climbing left turn to 2400 direct JOSQO and hold.

AWOS-3P <b>118.325</b>	ANCHORAGE CENTER <b>125.2 372.0</b>	CTAF <b>122.7 0</b>
---------------------------	--	------------------------



ELEV 20	TDZE 20
<p>173° to RWY 17</p> <p>Z1</p> <p>3200 X 60</p> <p>35</p>	
MIRL Rwy 17-35 0	

CATEGORY	A	B	C	D
LPV DA	270-1 250 (300-1)			
LNAV/VNAV DA	434-1⅜ 414 (500-1⅜)			
LNAV MDA	520-1 500 (500-1)	520-1⅜ 500 (500-1⅜)		
<b>C</b> CIRCLING	580-1 560 (600-1)	580-1½ 560 (600-1½)		580-2 560 (600-2)

AK, 26 DEC 2024 to 20 FEB 2025

AK, 26 DEC 2024 to 20 FEB 2025