

WAAS CH 93833 W35A	APP CRS 353°	Rwy Idg TDZE Apt Elev	3200 20 20
--	------------------------	-----------------------------	---------------------------------------

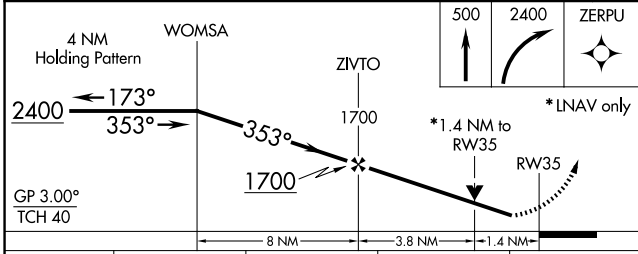
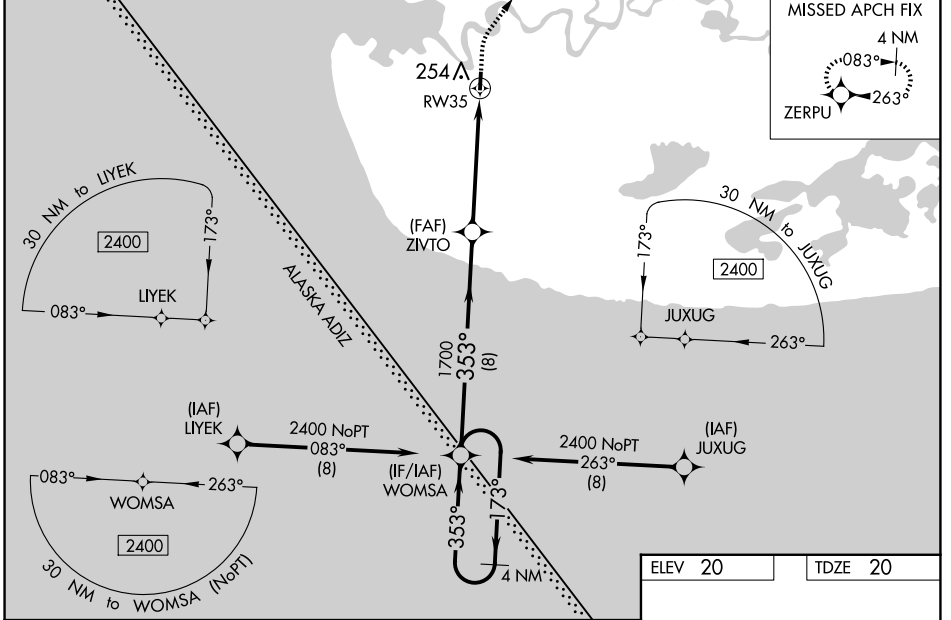
RNAV (GPS) RWY 35

KIPNUK (IIK) (PAKI)

⚠ Baro-VNAV NA when using Toksook Bay altimeter setting. For uncompensated Baro-VNAV systems, LNAV/VNAV NA below -20°C (-4°F) or above 54°C (130°F). Helicopter visibility reduction below ¾ SM NA. DME/DME RNP-0.3 NA. Procedure NA at night. VDP NA when using Toksook Bay altimeter setting. When local altimeter setting is not received use Toksook Bay altimeter setting: increase LPV DA to 389 feet and visibility all Cats ¼ SM. Increase LNAV/VNAV DA to 465 and visibility all Cats ⅓ SM. Increase all MDA 120 feet. Increase LNAV Cat C and D visibility to 1 ¼ SM, Circling Cat C to 2 SM, Cat D to 2 ¼ SM.

MISSED APPROACH: Climb to 500 then climbing right turn to 2400 direct ZERPU and hold.

AWOS-3P 118.325	ANCHORAGE CENTER 125.2 372.0	CTAF 122.7
---------------------------	--	----------------------



ELEV 20	TDZE 20						
<table border="1"> <tr> <td>500</td> <td>2400</td> <td>ZERPU</td> </tr> <tr> <td>↑</td> <td>↷</td> <td>✦</td> </tr> </table>		500	2400	ZERPU	↑	↷	✦
500	2400	ZERPU					
↑	↷	✦					
<p>353° to RW35</p> <p>MIRL Rwy 17-35</p>							

CATEGORY	A	B	C	D
LPV DA	270-1 250 (300-1)			
LNAV/VNAV DA	346-1 ⅓ 326 (400-1 ⅓)			
LNAV MDA	520-1	500 (500-1)	520-1 ⅓	500 (500-1 ⅓)
C CIRCLING	580-1	560 (600-1)	580-1 ½	580-2
			560 (600-1 ½)	560 (600-2)

AK, 26 DEC 2024 to 20 FEB 2025

AK, 26 DEC 2024 to 20 FEB 2025