

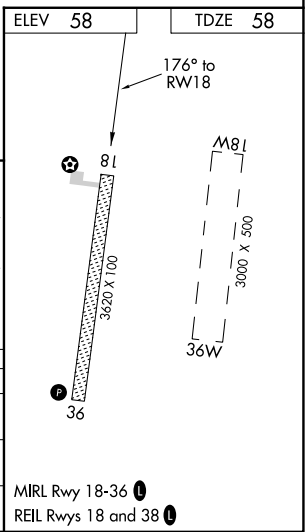
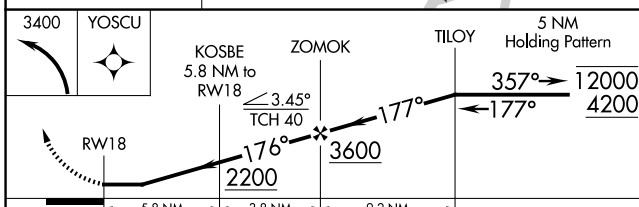
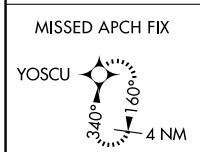
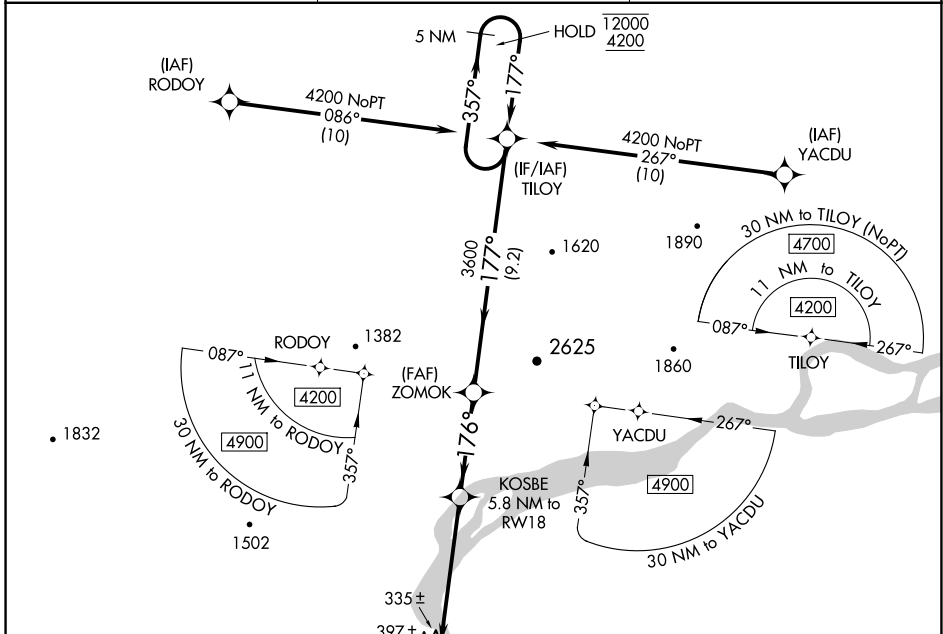
WAAS CH 87142 W18A	APP CRS 176°	Rwy Idg TDZE 58 Apt Elev 58	3620
--	------------------------	---	-------------

RNAV (GPS) RWY 18

RUSSIAN MISSION (RSH)(PARS)

RNP APCH.	Rwy 18 helicopter visibility reduction below 1 SM NA. Rwy 18 Straight-in and Circling minimums NA at night.	MISSED APPROACH: Climbing left turn to 3400 direct YOSCU and hold.
-----------	--	--

AWOS-3P 118.375	ANCHORAGE CENTER 118.15 251.05	CTAF 122.9
---------------------------	--	----------------------



CATEGORY	A	B	C	D
LP MDA	580-1	522 (600-1)	580-1½	522 (600-1½)
LNAV MDA	660-1	602 (700-1)	660-1¾	602 (700-1¾)
C CIRCLING	740-1	682 (700-1)	1120-3 1062 (1100-3)	1360-3 1302 (1400-3)

MIRL Rwy 18-36
REIL Rwy 18 and 38

AK, 26 DEC 2024 to 20 FEB 2025

AK, 26 DEC 2024 to 20 FEB 2025