

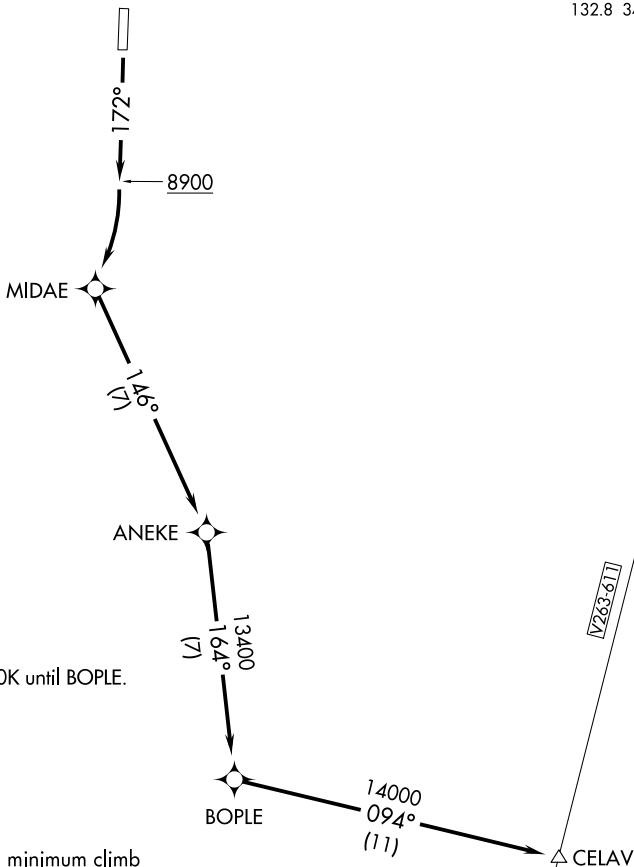
(ANEKE2.CELAV) 17229

ANEKE TWO DEPARTURE (OBSTACLE) (RNAV)

AL-9482 (FAA)

ANGEL FIRE (A.XX)
ANGEL FIRE, NEW MEXICO

AWOS-3
118.025
ALBUQUERQUE CENTER
132.8 346.35



NOTE: Do not exceed 250K until BOPLE.

NOTE: GPS required.

NOTE: RNAV 1

TAKEOFF MINIMUMS

Rwy 17: Standard with a minimum climb of 526' per NM to 12300.

Rwy 35: NA- obstacles.

TAKEOFF OBSTACLE NOTE

Rwy 17: Road 74' from DER, 481' right of centerline, 15' AGL/8414' MSL.

NOTE: Chart not to scale.

DEPARTURE ROUTE DESCRIPTION

TAKEOFF RUNWAY 17: Climb heading 172° to 8900, then climbing right turn to 14000 direct MIDAE, then via 146° track to ANEKE, then via 164° track to BOPLE, then via 094° track to CELAV.

ANEKE TWO DEPARTURE (OBSTACLE) (RNAV)

(ANEKE2.CELAV) 31JUL08

ANGEL FIRE, NEW MEXICO
ANGEL FIRE (A.XX)

SW-1, 23 JAN 2025 to 20 FEB 2025

SW-1, 23 JAN 2025 to 20 FEB 2025