

RNAV (GPS) Y RWY 18

PICAYUNE MUNI (MJD)

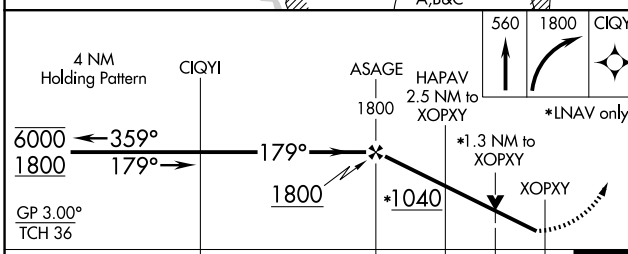
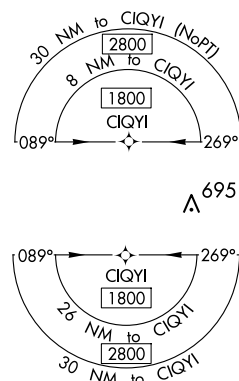
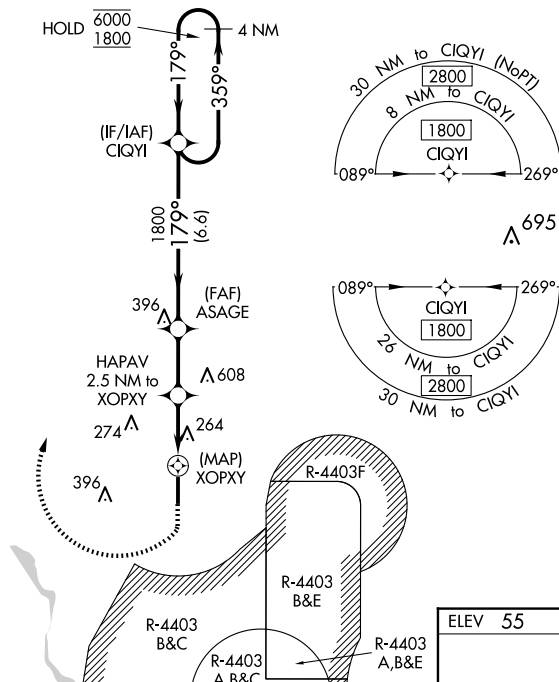
| | | |
|--|------------------------|---|
| WAAS CH 42938 W18A | APP CRS 179° | Rwy Idg 5000 TDZE 55 Apt Elev 55 |
|--|------------------------|---|

RNP APCH.

⚠ Baro-VNAV and VDP NA when using Stennis Intl altimeter setting. Rwy 18 helicopter visibility reduction below $\frac{3}{4}$ SM NA. For uncompensated Baro-VNAV systems, LNAV/VNAV NA below -15°C or above 5°C. When local altimeter setting not received, use Stennis Intl altimeter setting: increase LPV DA to 377 and visibility all Cats $\frac{1}{8}$ mile; increase LNAV/VNAV DA to 621 and visibility all Cats $\frac{1}{8}$ mile; increase all MDA 40 feet. Procedure NA when R-4403 B/C/E is active.

MISSED APPROACH: (Do not exceed 185K) Climb to 560 then climbing right turn to 1800 direct CIQYI and hold.

| | | |
|----------------------------|--|---------------------------------|
| AWOS-3PT 119.075 | GULFPORT APP CON * 124.6 354.1 | UNICOM 122.8 (CTAF) ① |
|----------------------------|--|---------------------------------|



| | |
|---------|---------|
| ELEV 55 | TDZE 55 |
|---------|---------|

Vertical scale diagram showing altitudes 81, 5000 x 75, and 36. A star symbol is at 81. A 179° heading is indicated.

| CATEGORY | A | B | C | D |
|-------------------|----------------------|----------------------|----------------------------|----------------------------|
| LPV DA | 343-1 | | 288 (300-1) | |
| LNAV/VNAV DA | 587-1 $\frac{7}{8}$ | | 532 (600-1 $\frac{7}{8}$) | |
| LNAV MDA | 520-1 | 465 (500-1) | 520-1 $\frac{3}{8}$ | 465 (500-1 $\frac{3}{8}$) |
| C CIRCLING | 520-1 465 (500-1) | 580-1 525 (600-1) | NA | |

SC-4, 23 JAN 2025 to 20 FEB 2025

SC-4, 23 JAN 2025 to 20 FEB 2025