

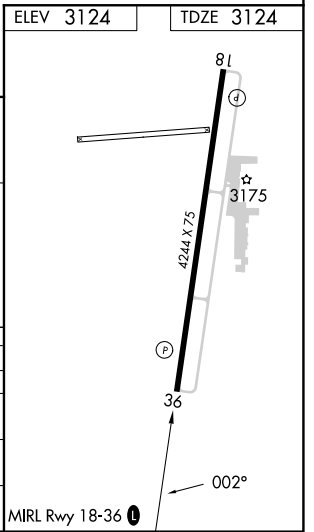
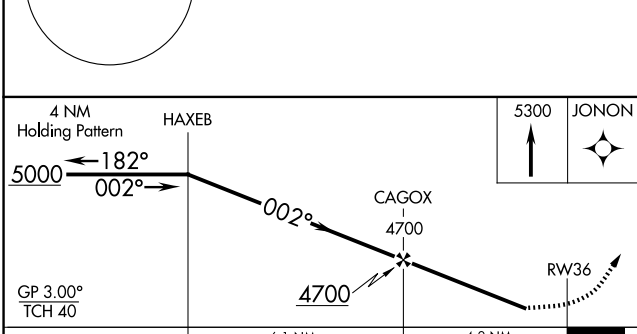
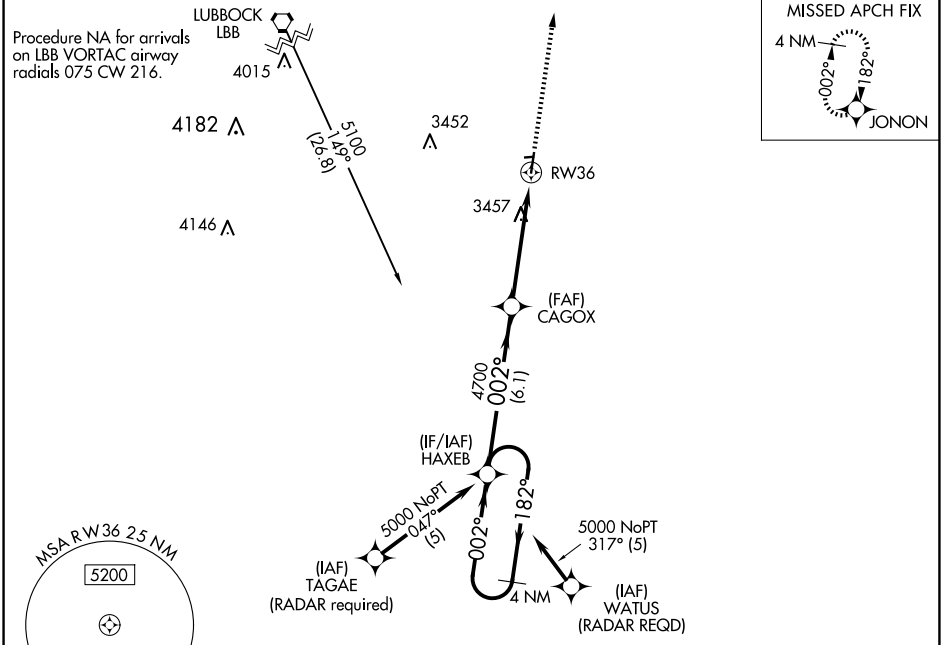
WAAS CH <b>86939</b> <b>W36A</b>	APP CRS <b>002°</b>	Rwy Idg <b>4244</b> TDZE <b>3124</b> Apt Elev <b>3124</b>
--	------------------------	---

# RNAV (GPS) RWY 36

CITY OF SLATON/LARRY T NEAL MEML (F49)

**V** Baro-VNAV NA. DME/DME RNP-0.3 NA. Helicopter visibility reduction  
**NA** below 3/4 SM NA. MISSED APPROACH: Climb to 5300 direct JONON and hold.

LBB ASOS <b>125.3 270.275</b>	LUBBOCK APP CON <b>119.2 351.8</b>	UNICOM <b>123.0 (CTAF)</b>
----------------------------------	---------------------------------------	-------------------------------



CATEGORY	A	B	C	D
LPV DA		3883-3	759 (800-3)	
LNAV/VNAV DA		3849-3	725 (800-3)	
LNAV MDA	3760-1	636 (700-1)	3760-1 <sup>3</sup> / <sub>4</sub>	636 (700-1 <sup>3</sup> / <sub>4</sub> )
<b>C</b> CIRCLING	3760-1 636 (700-1)	3820-1 696 (700-1)	3820-2 696 (700-2)	3820-2 <sup>1</sup> / <sub>4</sub> 696 (700-2 <sup>1</sup> / <sub>4</sub> )

SC-2, 23 JAN 2025 to 20 FEB 2025

SC-2, 23 JAN 2025 to 20 FEB 2025