

WAAS CH 58134 W01A	APP CRS 011°	Rwy Idg 4412 TDZE 221 Apt Elev 221
--	------------------------	---

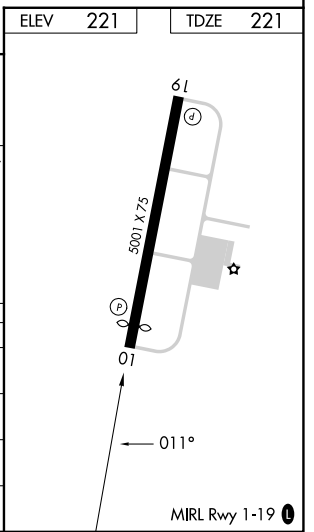
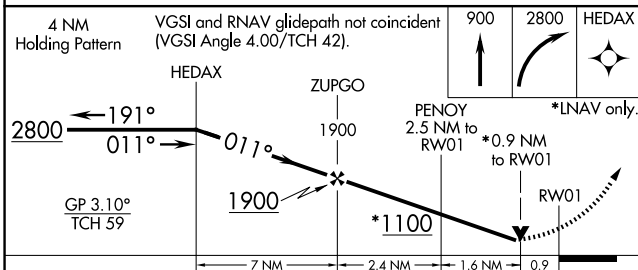
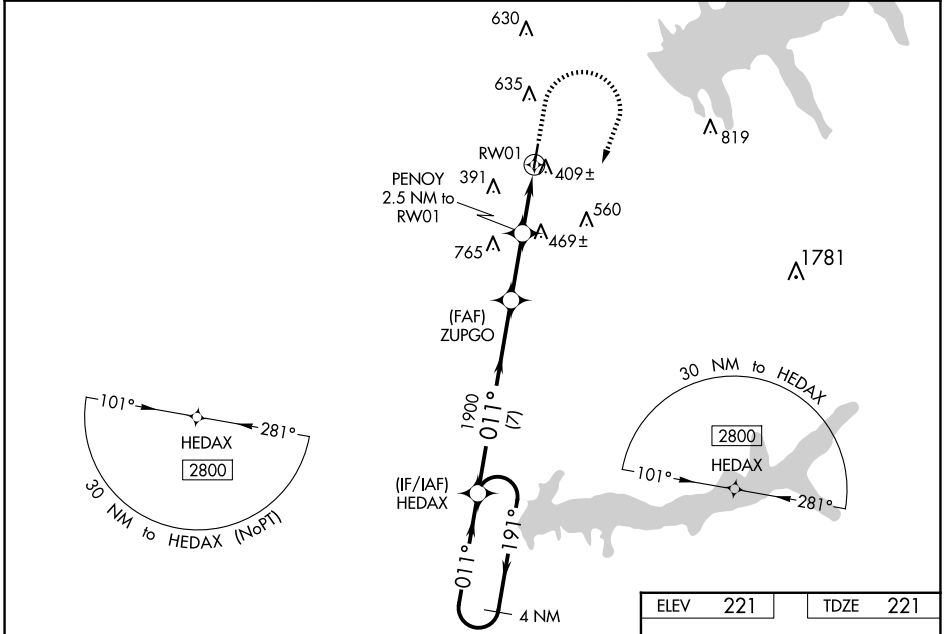
RNAV (GPS) RWY 1

PANOLA COUNTY (PMU)

⚠ For uncompensated Baro-VNAV systems, LNAV/VNAV NA below -15°C (5°F) or above 46°C (115°F).
⚠ DME/DME RNP-0.3 NA. Baro-VNAV and VDP NA when using University-Oxford altimeter setting.
⚠ When local altimeter setting not received, use Oxford altimeter setting and increase LPV DA to 688, LNAV/VNAV DA to 729 and MDA 80 feet, increase LPV and LNAV/VNAV all Cats visibility ¼ mile, LNAV Cats C, D visibility ½ mile, and Circling Cats B, C visibility ¼ mile.
 Helicopter visibility reduction below ¾ SM NA.

MISSED APPROACH: Climb to 900 then climbing right turn to 2800 direct HEDAX and hold.

AWOS-3PT 118.225	MEMPHIS CENTER 128.5 279.55	UNICOM 122.8 (CTAF) 📶
----------------------------	---------------------------------------	--



CATEGORY	A	B	C	D
LPV DA		614-1¼	393 (400-1¼)	
LNAV/VNAV DA		661-1⅜	440 (500-1⅜)	
LNAV MDA	660-1	439 (500-1)	660-1¼	439 (500-1¼)
C CIRCLING	740-1 519 (600-1)	1000-1 779 (800-1)	1000-2¼ 779 (800-2¼)	1120-3 899 (900-3)

SC-4, 23 JAN 2025 to 20 FEB 2025

SC-4, 23 JAN 2025 to 20 FEB 2025