

WAAS CH <b>53431</b> <b>W21A</b>	APP CRS <b>210°</b>	Rwy Idg <b>4000</b> TDZE <b>364</b> Apt Elev <b>364</b>
--	------------------------	---

# RNAV (GPS) RWY 21

WINONA-MONTGOMERY COUNTY (5A6)

RNP APCH - GPS.

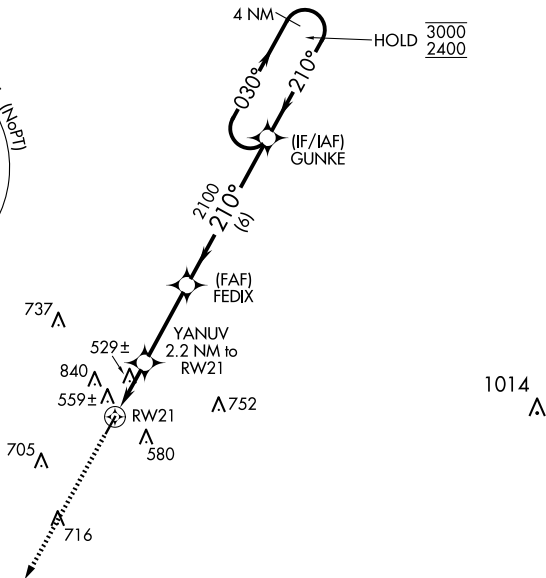
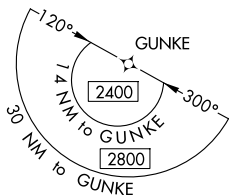
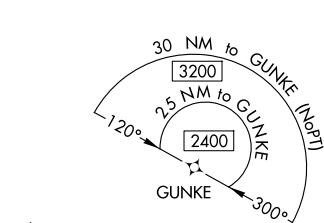
**NA** Rwy 21 helicopter visibility reduction below 1 SM NA.  
Procedure NA at night. Circling NA northwest of Rwy 3-21.  
When local altimeter setting not received, use GNF altimeter setting.

MISSED APPROACH: Climb to 2500 direct GUCEY and hold.

AWOS-3PT  
**120.175**

MEMPHIS CENTER  
**128.5 279.55**

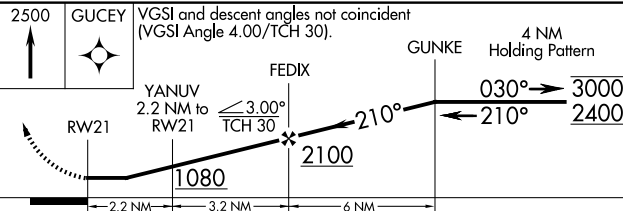
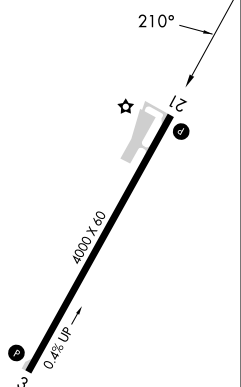
CTAF  
**122.9 0**



SC-4, 23 JAN 2025 to 20 FEB 2025

SC-4, 23 JAN 2025 to 20 FEB 2025

ELEV **364** TDZE **364**



CATEGORY	A	B	C	D
LP MDA	860-1	496 (500-1)	860-1 <sup>3</sup> / <sub>8</sub> 496 (500-1 <sup>3</sup> / <sub>8</sub> )	NA
LNAV MDA	900-1	536 (600-1)	900-1 <sup>1</sup> / <sub>2</sub> 536 (600-1 <sup>1</sup> / <sub>2</sub> )	NA
CIRCLING	960-1	596 (600-1)	1100-2 736 (800-2)	NA