

APP CRS
030°
 Rwy Idg **4000**
 TDZE **360**
 Apt Elev **364**

RNAV (GPS) RWY 3

WINONA-MONTGOMERY COUNTY (5A6)

RNP APCH - GPS.

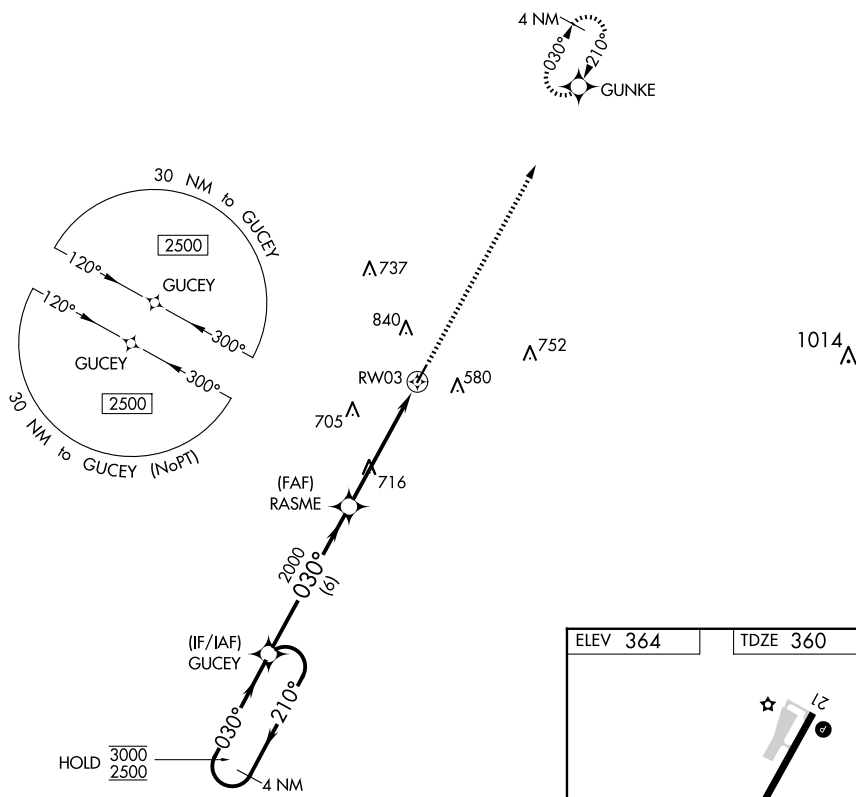
▽ Procedure NA at night. Rwy 3 helicopter visibility reduction below 1 SM NA.
△ NA When local altimeter setting not received, use GNF altimeter setting.

MISSED APPROACH: Climb to 2400 direct GUNKE and hold.

AWOS-3PT
120.175

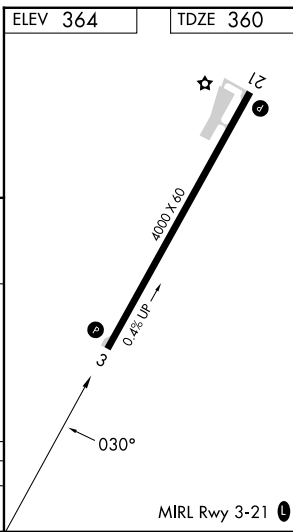
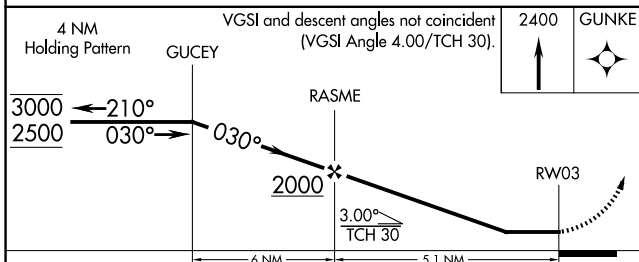
MEMPHIS CENTER
128.5 279.55

CTAF
122.9



SC-4, 23 JAN 2025 to 20 FEB 2025

SC-4, 23 JAN 2025 to 20 FEB 2025



CATEGORY	A	B	C	D
LNNAV MDA	1040-1	680 (700-1)	1040-2 680 (700-2)	NA