

# RNAV (GPS) RWY 6

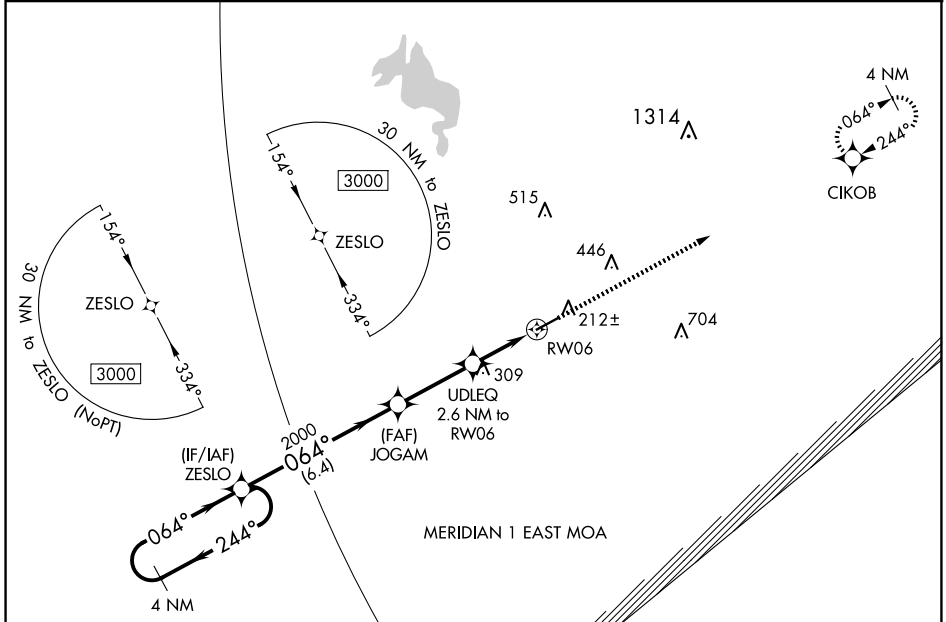
GEORGE DOWNER (AIV)

APP CRS	Rwy Idg	<b>5001</b>
<b>064°</b>	TDZE	<b>143</b>
	Apt Elev	<b>150</b>

**NA** DME/DME RNP-0.3 NA. Use Tuscaloosa Nil altimeter setting; when not received, use Columbus/W Point/Starkville altimeter setting and increase all MDA 20 feet, and Circling Cat C visibility ¼ mile. Procedure NA at night. Helicopter visibility reduction below 1 SM NA.

**MISSED APPROACH:**  
Climb to 3000 direct  
CIKOB and hold.

TCL ASOS <b>132.825</b>	COLUMBUS APP CON <b>135.6 323.275</b>	UNICOM <b>122.8 (CTAF) 0</b>
----------------------------	--	---------------------------------

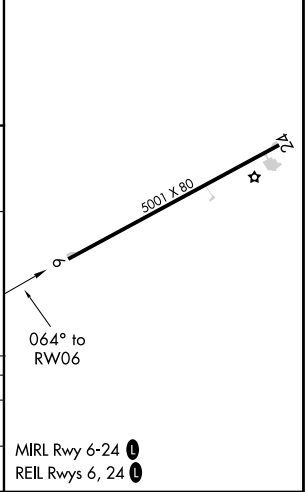


SE-4, 23 JAN 2025 to 20 FEB 2025

SE-4, 23 JAN 2025 to 20 FEB 2025

ELEV	150	TDZE	143
------	-----	------	-----

4 NM Holding Pattern		Visual Segment - Obstacles.		3000	CIKOB
ZESLO		JOGAM		UDLEQ	RW06
3000 ← 244°		2000		2.6 NM to RW06	
064° →		1020			
6.4 NM		3 NM		2.6 NM	
CATEGORY	A	B	C	D	
LNVA MDA	640-1	497 (500-1)	640-1 3/8	497 (500-1 3/8)	
<b>C</b> CIRCLING	720-1	570 (600-1)	820-1 3/4	900-2 1/2	
			670 (700-1 3/4)	750 (800-2 1/2)	



MIRL Rwy 6-24 **0**  
REIL Rwys 6, 24 **0**