

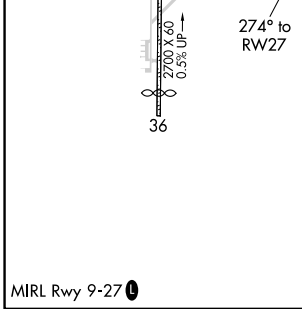
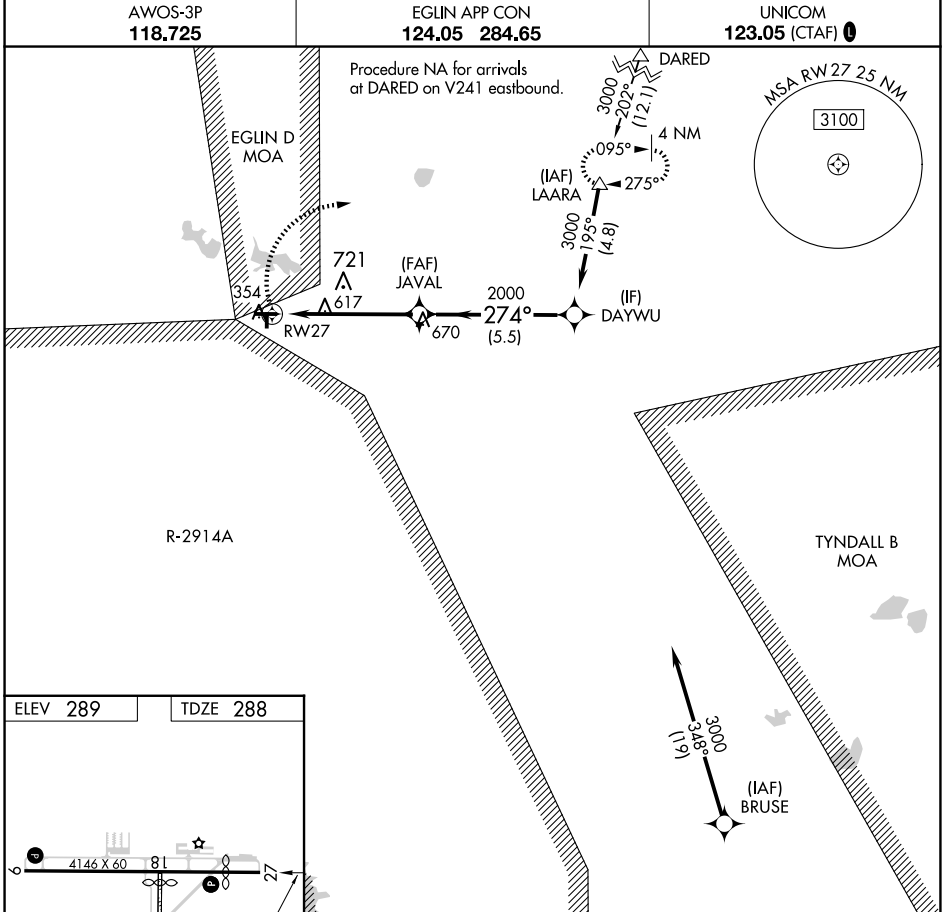
WAAS CH 97725 W27A	APP CRS 274°	Rwy Idg TDZE Apt Elev	3541 288 289
--	------------------------	-----------------------------	---

RNAV (GPS) RWY 27

DEFUNIAK SPRINGS (54J)

RNP APCH.
 ⚠ Circling NA to Rwy 18 and 36. Circling Rwy 9 NA at night.
 ⚠ Rwy 27 helicopter visibility reduction below 3/4 SM NA.

MISSED APPROACH: Climbing right turn to 3000
 direct LAARA and hold.



3000	LAARA	Visual Segment - Obstacles.	DAYWU
	△	JAVAL	
		1.7 NM to RWY 27	
		2000	3000
		1.7 NM	3.6 NM
		5.5 NM	
CATEGORY	A	B	C
LP MDA	880-1	592 (600-1)	NA
LNAV MDA	880-1	592 (600-1)	NA
	880-1	920-1	
ⓐ CIRCLING	591 (600-1)	631 (700-1)	NA

SE-3, 23 JAN 2025 to 20 FEB 2025

SE-3, 23 JAN 2025 to 20 FEB 2025