

APP CRS	Rwy Idg	<b>5822</b>
<b>357°</b>	TDZE	<b>4382</b>
	Apt Elev	<b>4382</b>

# RNAV (GPS) RWY 2

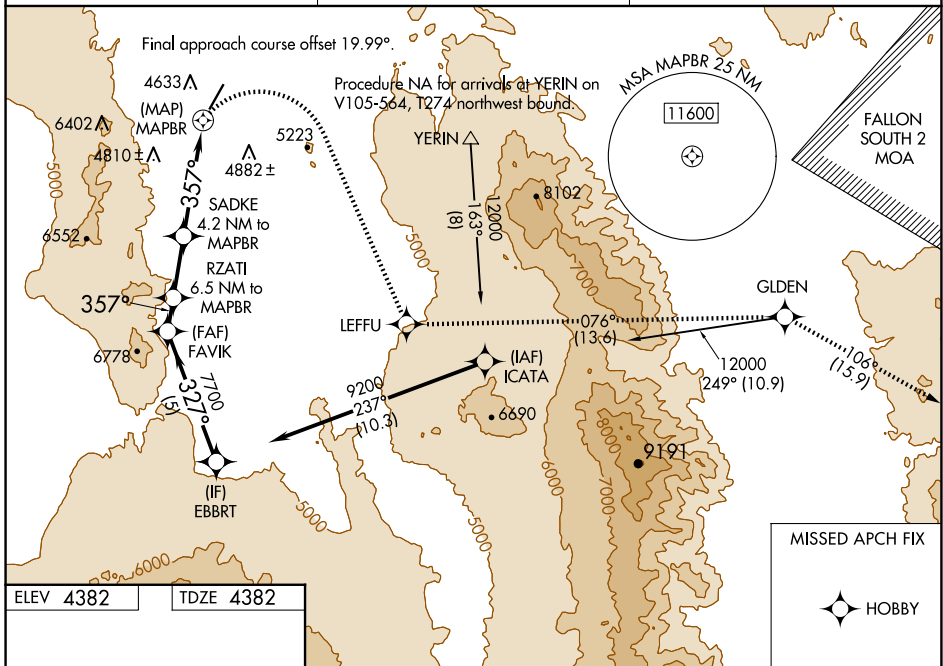
YERINGTON MUNI (O43)

RNP APCH - GPS.

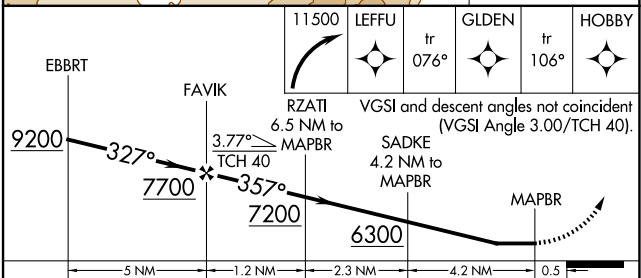
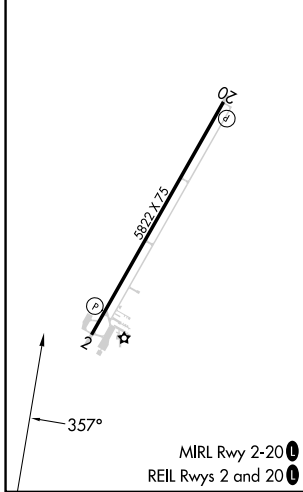
**NA** Procedure NA at night. Rwy 2 helicopter visibility reduction below 1 SM NA. Circling NA west of Rwy 2-20. Use SPZ altimeter setting, when not received, use RNO altimeter setting and increase all MDAs 40 feet and LNAV\* visibility Cat C 1/2 SM.

**MISSED APPROACH:** (Do not exceed 210K until LEFFU) Climbing right turn to 11500 direct LEFFU and on track 076° to GLDEN and on track 106° to HOBBY.  
 \*Missed approach requires minimum climb of 276 feet per NM to 9300.

SPZ AWOS-2 <b>120.475</b>	OAKLAND CENTER <b>125.75 284.65</b>	AUNICOM <b>122.8 (CTAF)</b>
------------------------------	--	--------------------------------



ELEV 4382	TDZE 4382
-----------	-----------



CATEGORY	A	B	C	D
LNAV MDA*	5040-1	658 (700-1)	5040-1 1/8 658 (700-1 1/8)	NA
LNAV MDA	6200-1 1/4 1818 (1900-1 1/4)	6200-1 1/2 1818 (1900-1 1/2)	6200-3 1818 (1900-3)	NA
CIRCLING	6200-1 1/4 1818 (1900-1 1/4)	6200-1 1/2 1818 (1900-1 1/2)	6200-3 1818 (1900-3)	NA

SW-4, 23 JAN 2025 to 20 FEB 2025

SW-4, 23 JAN 2025 to 20 FEB 2025