

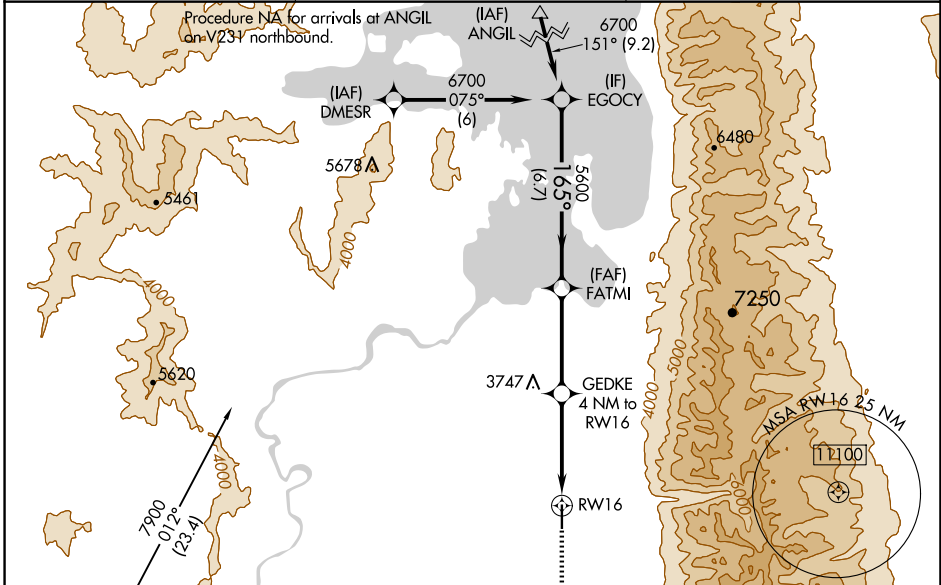
WAAS CH <b>45814</b> <b>W16A</b>	APP CRS <b>165°</b>	Rwy Idg <b>4798</b> TDZE <b>3086</b> Apt Elev <b>3086</b>
--	------------------------	---

# RNAV (GPS) RWY 16

RONAN (7S)

RNP APCH.	<p>Baro-VNAV NA when using Missoula altimeter setting. For uncompensated Baro-VNAV systems, procedure NA below -21°C or above 54°C. Circling NA east of Rwy 16-34. When local altimeter setting not received, use Missoula altimeter setting: increase LPV DA to 3550 and LNAV/VNAV DA to 3639 and all visibilities ¼ SM; increase all MDAs 120 feet and LNAV Cat B and Circling Cats A and B visibility ¼ SM.</p>	<p>MISSED APPROACH: Climb to 13000 direct IBBOR and on track 255° to HANIM and hold, continue climb-in-hold to 13000.</p>
-----------	--	---

AWOS-2 <b>119.925</b>	SALT LAKE CITY CENTER <b>127.075 244.875</b>	AUNICOM <b>122.8 (CTAF)</b>
--------------------------	---	--------------------------------



VGSI and RNAV glidepath not coincident (VGSI Angle 3.00/TCH 21).

EGOCY FATMI

13000 IBBOR tr 255° HANIM

GEDKE 4 NM to RW16 \*LNAV only

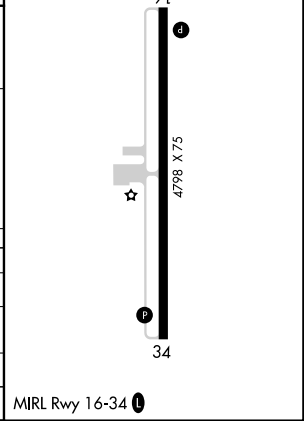
GP 3.00° TCH 40

6700 165° 5600 4400 RW16

6.7 NM 3.8 NM 4 NM

ELEV 3086	TDZE 3086
← 165°	
91	
4798 X 75	
34	

CATEGORY	A	B	C	D
LPV DA	3443-1¼	357 (400-1¼)		NA
LNAV/VNAV DA	3532-1¾	446 (500-1¾)		NA
LNAV MDA	3800-1	714 (800-1)		NA
CIRCLING	3800-1	714 (800-1)		NA



NW-1, 23 JAN 2025 to 20 FEB 2025

NW-1, 23 JAN 2025 to 20 FEB 2025