

(RONAN3.ANGIL) 22363

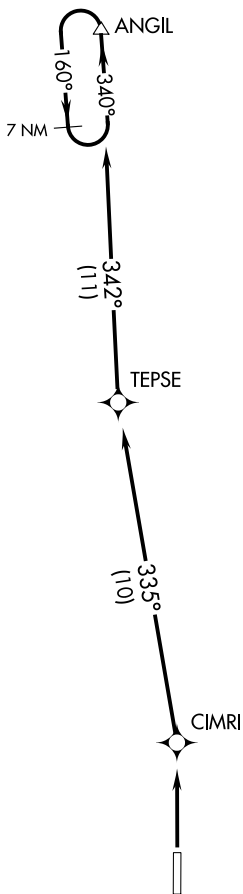
# RONAN THREE DEPARTURE (RNAV)

AL-9978 (FAA)

RONAN (7S0)  
RONAN, MONTANA

SALT LAKE CITY CENTER  
127.075 244.875  
CTAF  
122.8

**TOP ALTITUDE:  
10000**



NOTE: RNAV 1.

NOTE: GPS required.

### TAKEOFF MINIMUMS

Rwy 16: NA, see HANIM DEPARTURE

Rwy 34: Standard

NOTE: Chart not to scale.



### DEPARTURE ROUTE DESCRIPTION

**TAKEOFF RUNWAY 34:** Climb to 10000 direct CIMRI and on track 335° to TEPSE and on track 342° to ANGIL, continue climb in ANGIL holding pattern to cross ANGIL at or above MEA for route of flight before proceeding on course.

# RONAN THREE DEPARTURE (RNAV)

(RONAN3.ANGIL) 17AUG17

RONAN, MONTANA  
RONAN (7S0)

NW-1, 23 JAN 2025 to 20 FEB 2025

NW-1, 23 JAN 2025 to 20 FEB 2025