

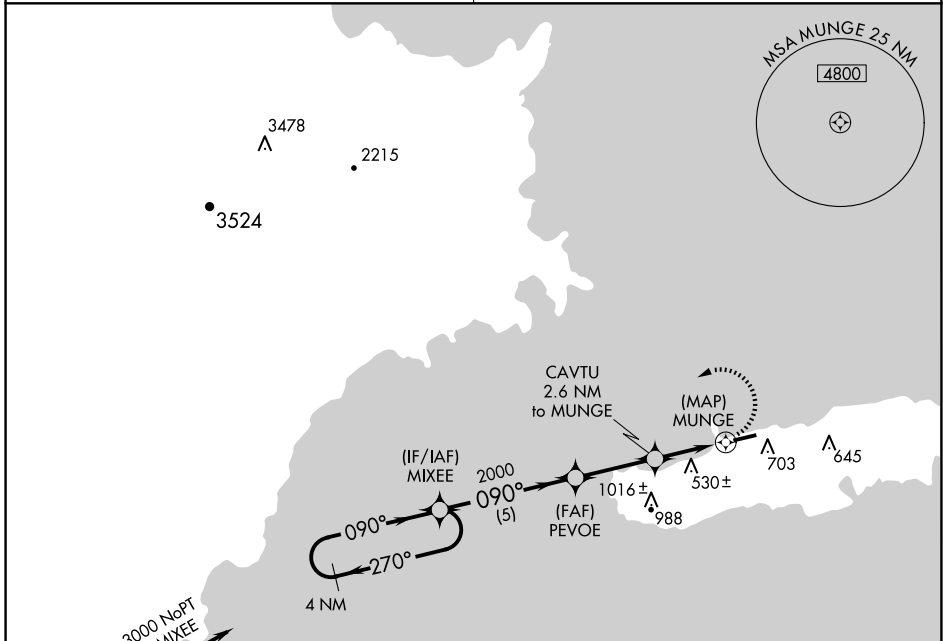
APP CRS	Rwy Idg	<b>3405</b>
<b>090°</b>	TDZE	<b>47</b>
	Apt Elev	<b>49</b>

# RNAV (GPS) RWY 9

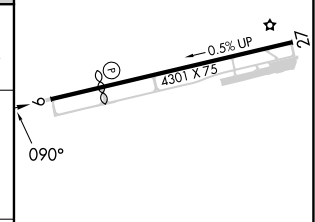
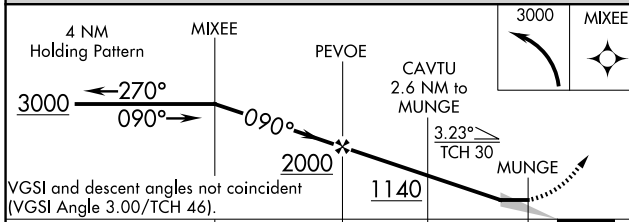
ANTONIO RIVERA RODRIGUEZ (VQS)(TJVQ)

<p><b>▼</b> Use Luis Munoz Marin Intl altimeter setting. DME/DME RNP-0.3 NA. <b>▲</b> NA Circling NA south of Rwy 9-27.</p>	<p>MISSED APPROACH: Climbing left turn to 3000 direct MIXEE and hold.</p>
---	---

<p>SAN JUAN CERAP APP CON <b>128.65 279.6</b></p>	<p>UNICOM <b>123.0</b> (CTAF)</p>
---	---------------------------------------



ELEV	49	<b>D</b>	TDZE	47
------	----	----------	------	----



CATEGORY	A	B	C	D
LNVA MDA	880-1 833 (900-1)	880-1¼ 833 (900-1¼)		NA
CIRCLING	1140-1¼ 1091 (1100-1¼)	1140-1½ 1091 (1100-1½)		NA

MIRL Rwy 9-27

SE-3, 23 JAN 2025 to 20 FEB 2025

SE-3, 23 JAN 2025 to 20 FEB 2025