

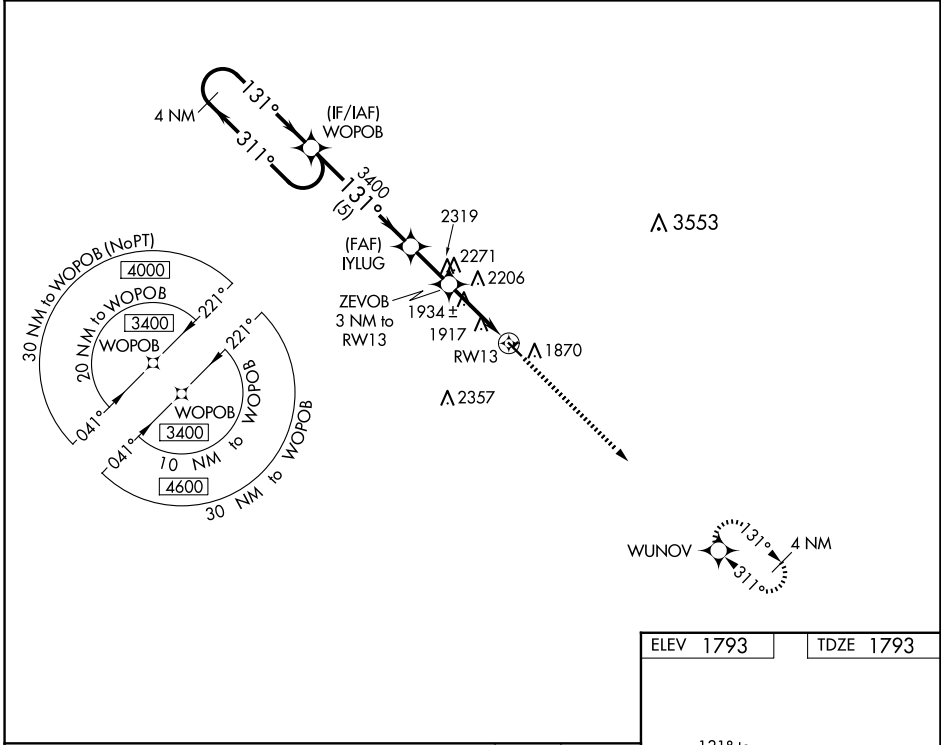
WAAS CH 58340 W13A	APP CRS 131°	Rwy Idg TDZE Apt Elev	3697 1793 1793
--	------------------------	-----------------------------	---

RNAV (GPS) RWY 13

CLARK COUNTY (8D7)

RNP APCH.	MISSED APPROACH: Climb to 3400 direct WUNOV and hold.
<p>▼ Rwy 13 helicopter visibility reduction below 3/4 SM NA. Use Watertown altimeter setting. Circling NA to Rwys 3 and 21.</p> <p>▲ NA</p>	

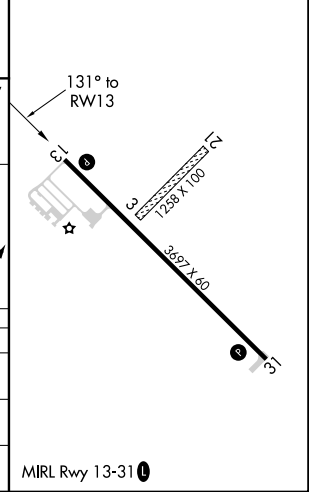
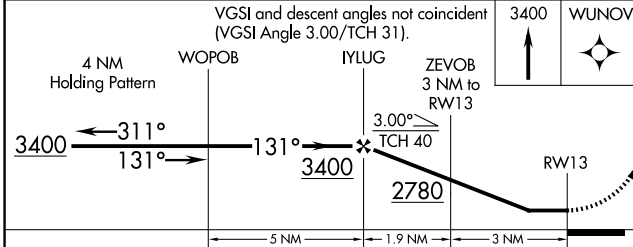
<p>ATY ASOS 126.625</p>	<p>MINNEAPOLIS CENTER 128.5 306.2</p>	<p>UNICOM 122.8 (CTAF) 0</p>
------------------------------------	--	---



NC-1, 23 JAN 2025 to 20 FEB 2025

NC-1, 23 JAN 2025 to 20 FEB 2025

ELEV 1793	TDZE 1793
-----------	-----------



CATEGORY	A	B	C	D
LP MDA	2260-1	467 (500-1)		NA
LNAV MDA	2400-1	607 (700-1)		NA
C CIRCLING	2400-1	607 (700-1)		NA