

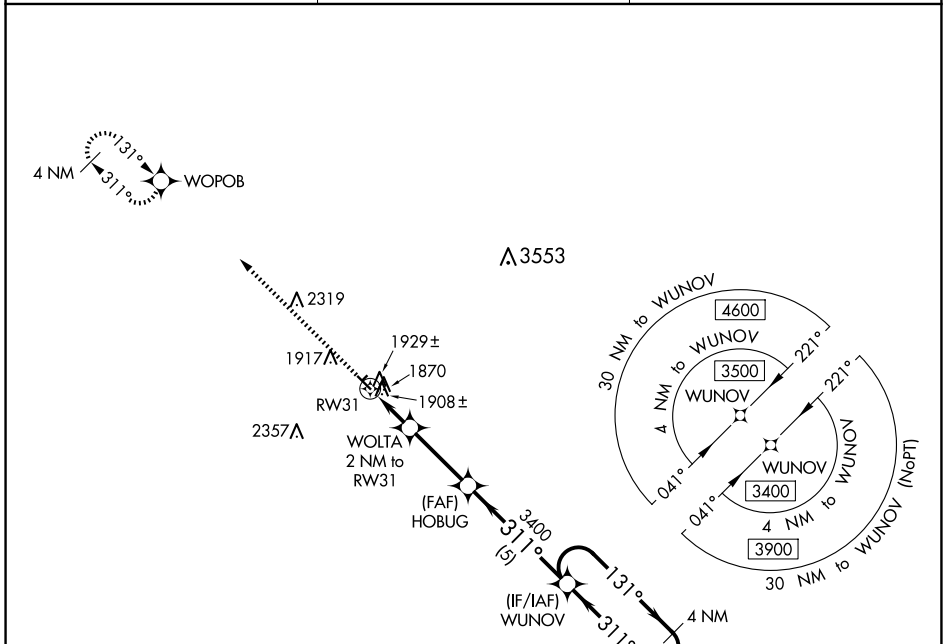
WAAS CH <b>63240</b> <b>W31A</b>	APP CRS <b>311°</b>	Rwy Idg TDZE Apt Elev	<b>3697</b> <b>1791</b> <b>1793</b>
--	------------------------	-----------------------------	---

# RNAV (GPS) RWY 31

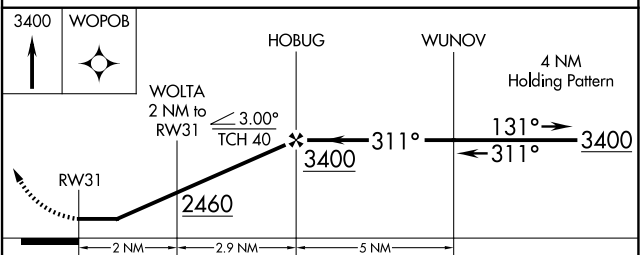
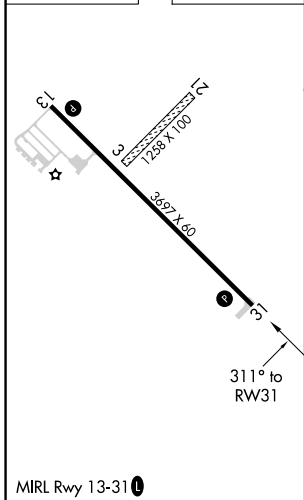
CLARK COUNTY (8D7)

<b>▽</b> Rwy 31 helicopter visibility reduction below 3/4 SM NA. <b>△</b> NA DME/DME RNP-0.3 NA. Use Watertown altimeter setting. Circling Rwys 3, 21 NA.	MISSED APPROACH: Climb to 3400 direct WOPOB and hold.
---	---

ATY ASOS <b>126.625</b>	MINNEAPOLIS CENTER <b>128.5 306.2</b>	UNICOM <b>122.8 (CTAF) 0</b>
----------------------------	--	---------------------------------



ELEV 1793	TDZE 1791
-----------	-----------



CATEGORY		A	B	C	D
LP	MDA	2220-1	429 (500-1)		NA
LNAV	MDA	2240-1	449 (500-1)		NA
<b>C</b>	CIRCLING	2340-1 547 (600-1)	2380-1 587 (600-1)		NA

NC-1, 23 JAN 2025 to 20 FEB 2025

NC-1, 23 JAN 2025 to 20 FEB 2025